

EVRY FISHER

2005

# BIKES

THE 1ST AND ONLY MOUNTAIN BIKING





Cake  
STARTS

**Light meets all-mountain.** We bake each Cake from scratch using Genesis Geometry, a low-maintenance single-pivot design, and the Manitou Swinger SPV Shock for an efficient pedaling platform. That's why Cake is irresistible. That's also why it's the lightest and most efficient all-mountain bike available.

**CAKE DLX** bikes feature 5" front and 5" rear wheel travel for incredibly light and efficient, yet slightly more burly, all-mountain performance.



↑ CAKE | DLX

**FRAME** Platinum Series ZR9000 double-butted aluminum | Genesis Geometry | 6061 T6 aluminum swingarm | Carbon fiber seatstays | Disc specific | Sealed cartridge bearings | 5" travel | **WHEELS** Bontrager Race Lite disc-specific wheelsystem w/24mm thru-axle and OSB rear | Bontrager ACX 26x2.2 folding tires | **SUSPENSION** Maverick SC 32, 80mm-125mm adjustable travel | Manitou Swinger 3-Way Air w/SPV | **COMPONENTRY** Shimano XT rear derailleur + shifters + front derailleur | Shimano XT 44/32/22 crank w/integral BB | Shimano XT hydraulic disc brakes, 8" front/6" rear, w/Shimano XT levers | **sizes** SM (16") | MD (17.5") | LG (19") | XL (21") | **COLOR** Matte Black + Matte Blue | **ALSO AVAILABLE AS A FRAMESET**

CAKE DLX = 5x5  
CAKE = 4x4

CAKE bikes feature 4" front and 4" rear wheel travel for all-mountain performance with race-ready versatility.



↑ CAKE 1

FRAME Platinum Series ZR9000 double-butted aluminum | Genesis  
Geometry | 6061 T6 aluminum swingarm | Carbon fiber seatstays | Disc specific | Sealed cartridge bearings | 4" travel WHEELS Bontrager Race Lite disc-specific  
wheelsystem w/OSB rear | Bontrager ACX 26x2.2 folding tires SUSPENSION Fox FRL Air w/Lock-Out, 100mm travel | Manitou Swinger 3-Way Air w/SPV  
COMPONENTRY Shimano XTR rear derailleur + XT shifters + front derailleur | Shimano XT 4A/32/22 crank w/integral BB | Shimano XT 6" hydraulic disc brakes  
w/Shimano XT levers SIZES SM (16") | M0 (17.5") | LG (19") | XL (21") COLOR Metallic Green + Metallic Silver



↓ CAKE 2 DLX

Genesis Geometry | 6061 T6 aluminum swingarm | Carbon fiber seatstays | Disc specific | Sealed cartridge bearings | 5" travel **WHEELS** Bontrager Race disc-specific wheelsystem w/OSB rear | Bontrager ACX 26x2.2 folding tires **SUSPENSION** Fox Float R Air, 130mm travel | Manitou Swinger 3-Way Air w/SPV **COMPONENTRY** Shimano XT SGS rear derailleur + LX shifters + front derailleur | Bontrager Race 44/32/22 crank | Hayes HFX-9 HD hydraulic disc brakes, 8" front/6" rear, w/Hayes levers | Shimano M520 clipless pedals **SIZES** SM (16") | MD (17.5") | LG (19") | XL (21") **COLOR** Metallic Warm Silver + Matte Silver



↑ CAKE 2

Genesis Geometry | 6061 T6 aluminum swingarm | Carbon fiber seatstays | Disc specific | Sealed cartridge bearings | 4" travel **WHEELS** Bontrager. Select disc-compatible wheelsystem w/OSB rear | Bontrager ACX 26x2.2 folding tires **SUSPENSION** Manitou Black Super Air, 100mm travel | Manitou Swinger 3-Way Air w/SPV **COMPONENTRY** Shimano XT rear derailleur + shifters + LX front derailleur | Bontrager Race 44/32/22 crank | Hayes HFX-9 6" hydraulic disc brakes w/Hayes levers | Shimano M520 clipless pedals **SIZES** SM (16") | MD (17.5") | LG (19") | XL (21") **COLOR** Matte Black + Matte Khaki



↑ CAKE 3 DLX

Geometry | 6061 T6 aluminum swingarm | Carbon fiber seatstays | Disc specific | Sealed cartridge bearings | 5" travel **WHEELS** Bontrager Select disc-compatible wheelsystem w/DSB rear | Bontrager ACX 26x2.2 folding tires **SUSPENSION** Manitou Black Elite, 120mm travel | Manitou Swinger 3-Way Air w/SPV **COMPONENTRY** Shimano LX SGS rear derailleur + LX shifters + front derailleur | Bontrager Select 44/32/22 crank | Hayes HFX-9 HD hydraulic disc brakes, 8" front/6" rear, w/Hayes levers | Shimano M520 clipless pedals **SIZES** SM (16") | MD (17.5") | LG (19") | XL (21") **COLOR** Metallic Silver + Metallic Black **FRAME** Platinum Series ZR9000 double-buttet aluminum | Genesis

↓ CAKE 3

**FRAME** Platinum Series ZR9000 double-butted aluminum | Genesis Geometry | 6061 T6 aluminum swingarm | Carbon fiber seatstays | Disc specific | Sealed cartridge bearings | 4" travel | **WHEELS** Bontrager Superstock disc-compatible wheelsystem w/OSB rear | Bontrager ACX 26x2.2 folding tires | **SUSPENSION** Manitou Skareb Elite, 100mm travel | Manitou Swinger 3-Way Air w/SPV | **COMPONENTRY** Shimano LX SGS rear derailleur + LX shifters + front derailleur | Bontrager Select 44/32/22 crank | Hayes HFX-9.6" hydraulic disc brakes w/Hayes levers | Shimano M520 clipless pedals | **SIZES** SM (16") | MD (17.5") | LG (19") | XL (21") | **COLOR** Metallic Matte Black + Metallic Matte Silver



## ↓ CAKE 4 DLX

**FRAME** Platinum Series ZR9000 double-butted aluminum | **Genesis** Geometry | 6061 T6 aluminum swingarm | Carbon fiber seatstays | Disc specific | Sealed cartridge bearings | 5" travel **WHEELS** Bontrager Superstock disc-compatible wheelsystem w/OSB rear | Bontrager ACX 26x2.2 folding tires **SUSPENSION** Manitou Black Comp, 120mm travel | Manitou Swinger 3-Way Air w/SFV **COMPONENTRY** Shimano Deore SGS rear derailleur + Deore shifters + front derailleur | Bontrager Select 44/32/22 crank | Hayes HFX-9 HD hydraulic disc brakes, 8" front/6" rear, w/Hayes levers | Shimano M505 clipless pedals **SIZES** SM (16") | MD (17.5") | LG (19") | XL (21") **COLOR** Metallic Black + Metallic Red



Cake





#### ↑ CAKE 4

**Geometry** | 6061 T6 aluminum swingarm | Carbon fiber seatstays | Sealed cartridge bearings | 4" travel | **WHEELS** Bontrager Superstock disc-compatible wheelsystem w/OSB rear | Bontrager ACX 26x2.2 tires | **SUSPENSION** Manitou Splice Comp w/Lock-Out, 100mm travel | Manitou Swinger 3-Way Air w/SPV  
**COMPONENTRY** Shimano Deore SGS rear derailleur + Deore shifters + front derailleur | Bontrager Select 44/32/22 crank | Shimano M430 cartridge V brakes w/Avid FRS levers | Shimano M505 clipless pedals | **SIZES** SM (16") | MD (17.5") | LG (19") | XL (21") | **COLOR** Metallic Silver + Metallic Blue



Free  
ride

STARTS



**Built to go down. Built to go off.** Fisher Freeride — efficient and evil-genius tough. Built for anyone who insists on riding stuff that has no good business being ridden.

Gary's fascination with gravity began the moment he pointed his first Klunker down a fire road on Mt. Tam. Before mountain biking became so structured with start lines and gold medals there was nothing but freeriding. Gary is probably lucky he didn't have big suspension back in those days, he might not be the old man of mountain biking if he did.



↑ KING FISHER ↓

**FRAME** King Fisher 6061 T6 aluminum | Hydroformed top and downtube | 1.5" externally reinforced headtube | 6061 T6 aluminum asymmetric swingarm | Cartridge bearings | Replacesable dropouts **WHEELS** Bontrager Big Earl freeride wheel system w/20mm thru-axle and OSB rear | Bontrager Big Earl 26x2.7 front/2.5 rear tires **SUSPENSION** Manitou Sherman Breakout Plus, 170mm travel, 20mm thru-axle | Fox DHX 4.0, coil over, adjustable ProPedal, tuning range and rebound **COMPONENTRY** SRAM X.D 1.1 rear derailleur + X-9 Trigger 1:1 shifters + Shimano Deore XT front derailleur | Shimano Saint 32/22 crank | Hayes HFX-MAG HD 8" hydraulic disc brakes w/Hayes HFX-MAG levers | 6061 CNC platform pedals w/cartridge bearings & cromoly spindles **SIZES** SM (15.5") | MD (17.5") | LG (19") **COLOR** Gloss Gray



## ↑ KING FISHER 2

**FRAME** King Fisher 6061 T6 aluminum | Hydroformed top and downtube | 1.5" externally reinforced headtube | 6061 T6 aluminum asymmetric swingarm | Cartridge bearings | Replaceable dropouts **WHEELS** Bontrager Earl freeride wheelsystem w/20mm thru-axle and OSB rear | Bontrager Big Earl 26x2.5 tires **SUSPENSION** Manitou Stance Flow, 170mm travel, 20mm thru-axle | Fox DHX 4.0, coil over, adjustable ProPedal, tuning range, and rebound **COMPONENTRY** SRAM X.9 1:1 rear derailleur + X-7 Trigger 1:1 shifters + Shimano Deore LX front derailleur | Bontrager Big Earl 32/22 crank w/Rock Ring | Hayes HFX-MAG HD 8" hydraulic disc brakes w/Hayes HFX-MAG levers | 6061 CNC platform pedals w/cartridge bearings & cromoly spindles **SIZES** SM (15.5") | MD (17.5") | LG (19") **COLOR** Matte Black

# BIGG'NS STORY

It's a beautiful thing to see the tangents the world of mountain bikes has taken over the years. Dirt, vert, urban, trail, free. Gary's Bigg'ns hardtails are meant to be the Jack-of-all-trades bike for the hardcore. Designed to do everything well. You name it, Bigg'ns rides it.

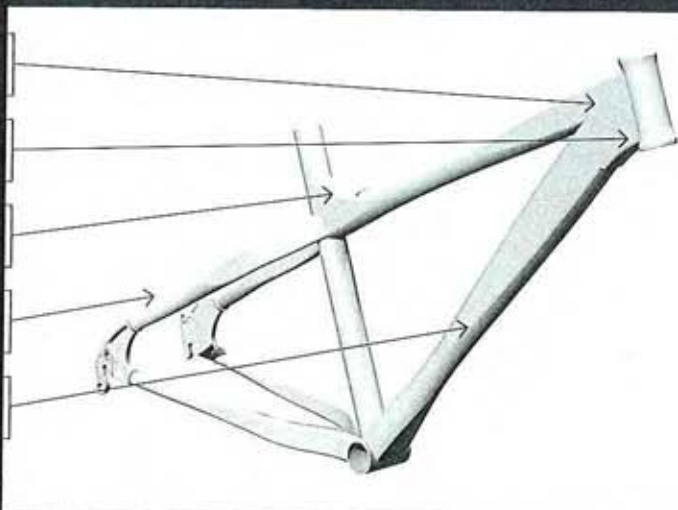
Extreme box section of top and down tubes disperses forces for optimum ride quality.

Reinforced headtube, externally butted for maximum strength (and safety) when landing jumps.

Top tube and seat tube are gusseted for rock-solid strength when landing.

Compact rear maximizes maneuverability for going over and around obstacles.

Frame geometry is aggressively sloped to make the bike easier to move under the rider during tricks and jumps.



Free  
ride

↑ GED

FRAME Bigg'ns 6061 straight gauge aluminum | Reinforced headtube | Box section top and downtubes | Manipulated chain and seatstays | Cold-forged dropouts | WHEELS Shimano M525 Disc hubs | Sun Ryno Lite rims | Bontrager Big Earl K 26x2.5 tires | SUSPENSION Marzocchi Drop Off | 130mm travel | COMPONENTRY Shimano LX rear derailleur + Deore shifters + front derailleur | Bontrager Earl 32/22 crank w/Rock Ring | Hayes HFX-9 hydraulic disc brakes, 8" front/6" rear, w/Hayes levers | Alloy BMX pedals | SIZES XS (13") | SM (15.5") | MD (17.5") | LG (19.5") | XL (21.5") | COLOR Metallic Black



↓ BITTER

Box section top and downtubes | Manipulated chain and seatstays | Cold-forged dropouts **WHEELS** Shimano M475 Disc hubs | Sun Ditchwitch rims | Bontrager Earl 26c tires **SUSPENSION** Manitou Stance Static | 100mm travel **COMPONENTRY** Shimano Deore rear derailleur + Alivio shifters + front derailleur | Bontrager Earl 32/22 w/Rock Ring crank | Hayes Solo XC hydraulic disc brakes, 8" front/6" rear, w/Hayes levers | Alloy BMX pedals **SIZES** XS (13") | SM (15.5") | MD (17.5") | LG (19.5") | XL (21") **COLOR** Metallic Silver



↓ MULLET

**FRAME** Bigg's 6061 straight gauge aluminum | Reinforced headtube | Box section top and downtubes | Manipulated chain and seatstays | Cold-forged dropouts **WHEELS** Shimano M475 Disc hubs | WTB Speed Disc rims | Bontrager Earl 26x2.4 tires **SUSPENSION** Manitou Splice comp | 100mm travel **COMPONENTRY** Shimano Alivio rear derailleur + EF29 shifters + Acera front derailleur | Shimano MC08 42/32/22 crank | Hayes Linx-2 mechanical disc brakes, 8" front/6" rear, w/alloy levers | Alloy BMX pedals **SIZES** XS (13") | SM (15.5") | MD (17.5") | LG (19.5") | XL (21") **COLOR** Candy Blue

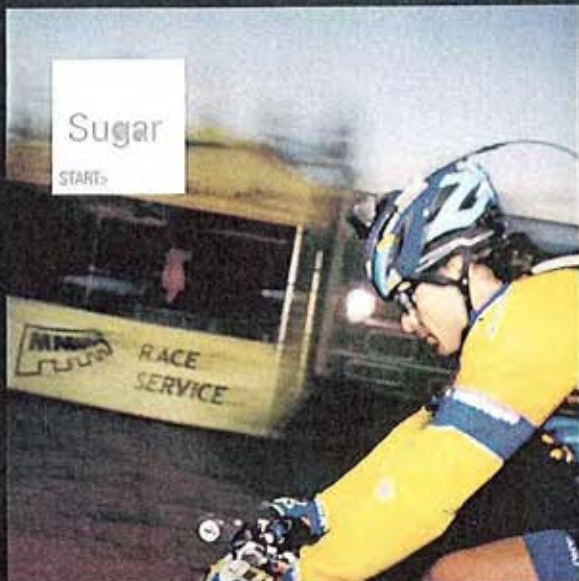


↑ TOPIE

**FRAME** Bigg's 6061 straight gauge aluminum | Reinforced headtube | Box section top and downtubes | Manipulated chain and seatstays | Cold-forged dropouts **WHEELS** Alloy QR front hub w/ Shimano RM30 rear hub | WTB Dual Duty rims | Bontrager Earl 26x2.4 tires **SUSPENSION** InSync Edge 4 | 100mm travel **COMPONENTRY** Shimano Acera rear derailleur + EF29 shifters + C050 front derailleur | SR XCC-150 42/34/24 crank | Tekro V brakes w/alloy levers | Nylon BMX pedals **SIZES** XS (13") | SM (15.5") | MD (17.5") | LG (19.5") | XL (21") **COLOR** Red

Sugar

START>



**Sugar is the ultimate performance enhancer.** When Gary introduced Sugar, he had no idea it would change the cross-country racing world. Or did he? Sugar full-suspension bikes are efficient, lightweight, and wicked fast. They provide a pure, hardtail-like connection to the trail without the hard edge.



↑ SUGAR 292

**FRAME** Platinum Series ZR9000 double-butted aluminum | **DRIVE TRAIN** SRAM X.O 1:1 alloy rear derailleur + X-9 Trigger 1:1 alloy shifters + Shimano XT front derailleur | **CRANK** Bontrager Race Lite 29" 44/32/22 crank | **PEDALS** Shimano M520 clipless pedals | **WHEELS** Bontrager Race Lite 29" disc-specific wheelsystem w/OSB rear | **TIRES** Bontrager ACX 29x2.2 folding tires | **SUSPENSION** RockShox Team 29", 100mm travel | **FOX** Float R | **BRAKES** Hayes HFX-9 hydraulic disc brakes w/Hayes levers | **SIZES** SM (16") | MD (17.5") | LG (19") | XL (21") | **COLOR** Red



## ↓ SUGAR 293

**FRAME** Platinum Series ZR9000 double-butted aluminum | b-link suspension | Genesis 29" Geometry **WHEELS** Bontrager Race 29" disc-specific wheelsystem w/OSB rear | Bontrager ACX 29x2.2 folding tires **SUSPENSION** RockShox Reba Race 29", 100mm travel | Fox Float R **COMPONENTRY** SRAM X.9 rear derailleur + X-7 Trigger 1:1 shifters + Shimano Deore front derailleur | Bontrager Race 44/32/22 crank | Avid BB7 mechanical disc brakes w/Avid FRS levers | Shimano M520 clipless pedals **SIZES** SM (16") | MD (17.5") | LG (19") | XL (21") **COLOR** Black



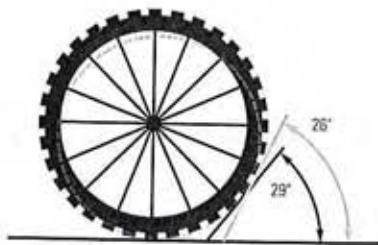
## ↑ SUGAR 4+

**FRAME** Gold Series 6061 T6 double-butted aluminum | sybil-link suspension | Genesis Geometry **WHEELS** Shimano M525 Disc hubs | WTB Dual Duty rims | Bontrager Jones XR 26x2.25 front/2.2 rear tires **SUSPENSION** Manitou Splice Super, 70-100mm adjustable travel | RockShox BAR Adjust **COMPONENTRY** Shimano LX SGS rear derailleur + Deore shifters + LX front derailleur | Bontrager Select 44/32/22 crank | Shimano V brakes w/Avid FRS levers | Shimano M505 clipless pedals **SIZES** SM (15.5") | MD (17.5") | LG (19") | XL (21") **COLOR** Metallic Orange + Metallic Black

# 29ER STORY

Gary Fisher is wise about size. Once upon a time he realized that increasing the size of a wheel effectively decreases the size of all obstacles. The 29er was born. By increasing wheels by three inches, Gary created bikes that are less affected by dips, bumps, and soft terrain. They also help maintain speed and lower the rider's center of gravity in relation to the wheels, making for an exceptionally stable ride. And a study by Pepperdine University found that 29" wheels ride 6% faster on uphill courses and 3% faster on cross-country courses than their 26" cousins. All things considered, Fisher 29ers are pretty cool. Pretty cool, indeed.

29" wheels are versatile. Dirt. Asphalt. It really doesn't matter. Fisher 29ers let you turn a great mountain bike into a great city/path bike by simply swapping 700c road tires onto the 29er wheels. Yep — standard road tires fit like a glove. Or like a tire should.



29" wheels decrease your angle of attack. Why should you care? Decreasing the angle of attack lets you roll over obstacles faster, smoother, and easier than you can with smaller wheels.



29" wheels create a longer tire contact patch. To make a longer-contact-patch stay short, this helps you float through mud, sand, and snow. Not getting bogged down helps you maintain your momentum. Which is a good thing.

## PARAGON →

**FRAME** Premium Series ZH9000 internally and externally butted aluminum | **Disc specific** | **Geometry** | **WHEELS** Bontrager Race 29" disc-specific wheelsystem w/OSS rear | **Bontrager AXC Z9AX Z** folding tires | **SUSPENSION** RockShox Reba Race 29" | 80mm travel | **COMPONENTS** SRAM X9 rear derailleur + X9 trigger | 1 alloy shifters + Shimano LX front derailleur | **Bontrager Race 44/27/22** crank | **Harvee HFX 9** hydraulic disc brakes w/levers | Shimano M520 oilless pedals | **sizes** SM [15.5"] | MD [17.5"] | LG [19"] | XL [21"] | **colors** las Red





Genesis  
SIS  
BIKES

↓ X-CALIBER

**FRAME** Platinum Series ZR9000 internally and externally butted aluminum | Disc specific | Genesis 29" Geometry **WHEELS** Bontrager Super stock 29" disc-specific wheelsystem w/OSB rear | Bontrager ACK 29x2.2 folding tires **SUSPENSION** RockShox Reba SL 29" | 80mm travel **COMPONENTRY** SRAM X.7 rear derailleur + X-7 Trigger 1-1 shifters + Shimano Deore front derailleur | Bontrager Select 44/32/22 crank | Avid BB7 mechanical disc brakes w/Avid TR5 levers | Shimano M505 clipless pedals **SIZES** SM (15.5") | MD (17.5") | LG (19") | XL (21") **COLOR** Metallic Black

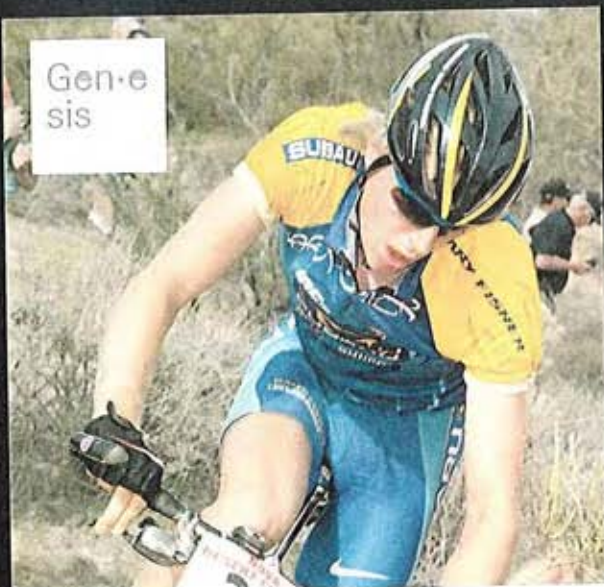


↑ RIG

**FRAME** Platinum Series SS internally and externally butted aluminum w/eccentric bottom bracket | Genesis 29" Geometry **WHEELS** Bontrager Race Disc front hub w/ Bontrager Race Disc SS rear hub | Bontrager Mustang 29" disc rims | Bontrager Jones ACK K 29x2.2 tires **SUSPENSION** RockShox Reba SL 29" | 80mm travel **COMPONENTRY** Bontrager Race Lite SS 32T crank | Avid BB7 mechanical disc brakes w/Avid Speed Dial 7 levers | Shimano M505 clipless pedals **SIZES** SM (15.5") | MD (17.5") | LG (19") | XL (21") **COLOR** Pearl Purple



Gen·e  
sis



Engineered for those who demand an honest, undiluted connection to the trail, these bikes are the ultimate evolution of a beautifully simple design. All new for 2005, Fisher Hardtails improve on perfection with two platforms: Platinum Series Aluminum and Aluminum Carbon Damping Composite (AC/DC) frames.

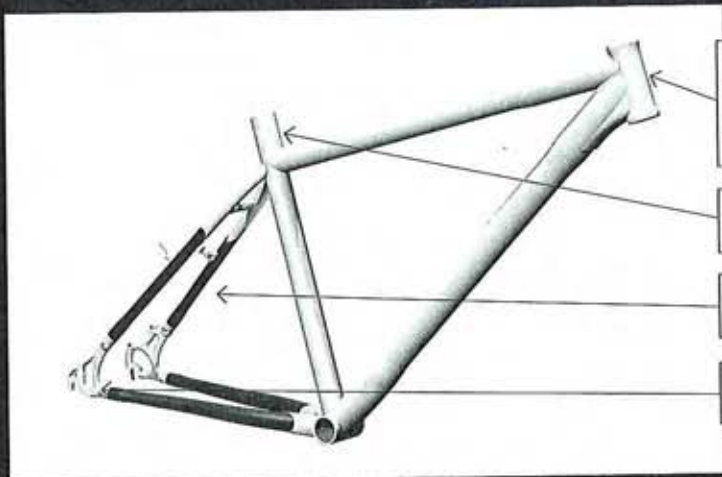


↑ ZIGGURAT

FRAME AC/DC ZR9000 internally and externally butted aluminum main frame w/carbon composite seat and chainstays | Genesis Geometry WHEELS Bontrager Race disc-compatible wheelsystem w/OSB rear | Bontrager Jones XR 26x2.25 front/26x2.2 rear tubeless-ready tires SUSPENSION Fox FRL w/Lock-Out | 100mm travel COMPONENTRY SRAM X.0 1:1 alloy rear derailleur + X-9 Trigger 1.1 alloy shifters + Shimano XT front derailleur | Bontrager Race Lite 44/32/22 crank | Avid SD-SL cartridge V brakes w/Avid FR5 levers | Shimano M520 clipless pedals SIZES SM (15.5') | MD (17.5') | LG (19') | XL (21') COLOR Silver + Metallic Black

# AC/DC STORY

AC/DC? Yep. Aluminum Carbon Damping Composite. When Ryder Hesjedal (runner up in the 2003 Elite World Championships!) of the Subaru Gary Fisher Mountain Bike Team came to Gary and said "Hey, any chance I could get a little more relief for these long World Cup races, yet stay on a hardtail?" Gary said, "Hmmm." Next thing you know, we're introducing Genesis AC/DC technology. By combining an aluminum front end with a full carbon composite back end, we built a hardtail that's light, stiff, efficient, and offers saintly forgiveness from the abuse of the trail.



Front end based on Gary's all-new Platinum Series ZR9000 aluminum frame. It's got a reinforced head tube and highly manipulated main tubes that have been internally and externally butted for optimum weight and premium ride quality.

27.2mm seat post diameter allows a more forgiving ride than more rigid, larger-diameter posts.

Full carbon composite rear end dampens vibration and tunes out the small stuff that wears a rider down.

Disc-specific dropouts have been scalloped and optimized for weight savings and stiffness.



NON-DISC MODEL ALSO AVAILABLE.  
SEE PAGE 45 FOR DETAILS.

↑ BIG SUR DISC

FRAME AC/DC ZR9000 internally and externally butted aluminum main frame w/carbon composite seat and chainstays | Genesis Geometry **WHEELS** Bontrager Superstock disc-compatible wheelsystem w/OSB rear | Bontrager Jones XR 26x2.2 tires **SUSPENSION** Manitou Skareb Super w/TPC Lock-Out | 100mm travel **COMPONENTRY** Shimano XT rear derailleur + LX shifters + front derailleur | Bontrager Race 44/32/22 crank | Hayes HFX-9 hydraulic disc brakes w/Hayes levers | Shimano M505 clipless pedals **SIZES** SM (15.5") | MD (17.5") | LG (19") | XL (21") **COLOR** Ice Purple

# GENESIS GEOMETRY

It's what makes a Fisher a Fisher. It's what creates the unmistakable "Fisher Feel." If you've ridden one, you know exactly what we're talking about: the feeling of being in control, comfortable, and confident. Of course, as any Boston fan knows, it's more than a feeling — it's about placing the rider's center of gravity in a better position for better climbing and more confident descending. Genesis Geometry can actually help make a beginning rider good, and a good rider great.



## CLIMB.

By shortening the chainstays, Genesis Geometry concentrates more of your weight on the rear wheel, aiding traction.



## DESCEND.

Genesis Geometry moves your center of gravity further behind the front wheel so you're less likely to go over the handlebars.



## STEER.

A shorter stem requires less hand movement to steer, creating more precise maneuvering.



## MAINTAIN.

Your normal riding position is maintained to keep you comfortable.

H O O K O O E K O O →

Frame: Platinum Series Z99000 internally and externally coated aluminum | Genesis Geometry  
 wheels: Alloy Disc CR hubs | Bontrager Maxxick rims | Bontrager A0X 26x2.2 folding tires  
 suspension: RockShox Pivot SL | 100mm travel | **COMING SOON** Shimano LX SGS rear  
 derailleur + LX Shifters + front derailleur | Bontrager Select 44/32/22 crank | Shimano 420 V-  
 brakes w/avid springs | Shimano M505 clipless pedals | sizes XS (3'7" | SM (5'5" |  
 MD (5'7" | LG (5'9" | XL (21") | color: Ice Blue



↓ TASSAJARA DISC

FRAME Gold Series 6061 T6 internally and externally butted aluminum | Genesis Geometry **WHEELS** Shimano M525 Disc hubs | WTB Speed Disc rims | Bontrager Jones XR 26x2.25 front/2.2 rear tires **SUSPENSION** Manitou Axel Elite w/TPC Lock-Out | 100mm travel **COMPONENTRY** Shimano LX rear derailleur + Deore shifters + front derailleur | Bontrager Select 44/32/22 crank | Hayes Solo XC hydraulic disc brakes w/alloy levers | Shimano M505 clipless pedals **SIZES** XS (13") | SM (15.5") | MD (17.5") | LG (19") | XL (21") **COLOR** Metallic Black



↑ TASSAJARA

FRAME Gold Series butted aluminum | Genesis Geometry **WHEELS** Shimano M525 hubs | WTB Dual Duty rims | Bontrager Jones XR 26x2.25 front/2.2 rear tires **SUSPENSION** Manitou Axel Elite w/TPC Lock-Out | 100mm travel **COMPONENTRY** Shimano LX rear derailleur + Deore shifters + front derailleur | Bontrager Select 44/32/22 crank | Promax V brakes w/alloy levers | Alloy platform pedals **SIZES** XS (13") | SM (15.5") | MD (17.5") | LG (19") | XL (21.5") **COLOR** Metallic Black + Metallic Red



↑↑ MARLIN

FRAME Gold Series butted aluminum | Genesis  
Geometry **WHEELS** Alloy QR front hub w/ Shimano RM60 rear hub | WTB Dual Duty rims | Bontrager Jones XR 26x2.25  
front/2.2 rear tires **SUSPENSION** Manitou Axel Comp w/TPC Lock-Out | 100mm travel **COMPONENTRY** Shimano Deore rear  
derailleur + Shimano Alivio shifters + Alivio front derailleur | Bontrager Sport 42/32/22 crank | Promax V brakes w/alloy  
levers | Alloy platform pedals **SIZES** XS (13") | SM (15.5") | MD (17.5") | LG (19") | XL (21") **COLORS** Green | Candy  
Blue + Silver

WAAHOO

FRAME Gold Series 6061 T6 internally and externally butted aluminum | Genesis Geometry **WHEELS** Alloy QR front hub w/Shimano RM60 rear hub | WTB Dual Duty rims | Bontrager Jones XR 26X2.25 front/2.2 rear tires **SUSPENSION** RS Judy | 100mm travel **COMPONENTRY** Shimano Alivio rear derailleur + EF29 shifters + C050 front derailleur | Shimano MCO8 42/32/22 crank | Tektro V brakes w/alloy levers | Nylon platform pedals **SIZES** XS (13") | SM (15.5") | MD (17.5") | LG (19") | XL (21") **COLORS** Blue | Black + Metallic Dark Gray





**Bikes designed for women that fit right and build on a woman's strengths.** Genesisters bikes refine Fisher's famous Genesis Geometry, taking advantage of a woman's lower center of gravity. Properly positioned, a rider's center of gravity is key to improved climbing and safer, more confident descents.



↑ CAKE 3 ■ LX GS

**FRAME** Platinum Series ZR9000 double-butted aluminum | Genesisters Geometry | 6061 T6 aluminum swingarm | Carbon fiber seatstays | Disc specific | Sealed cartridge bearings | 5" travel **WHEELS** Bontrager Select disc-compatible wheelsystem w/OSB rear | Bontrager ACX 26x2.2 folding tires **SUSPENSION** Manitou Black Elite Dive | 120mm travel | Manitou Swinger 3-Way Air w/SPV **COMPONENTRY** Shimano LX SGS rear derailleur + LX shifters + front derailleur | Bontrager Select 44/32/23 crank | Hayes HFX-9 HD hydraulic disc brakes, 6" front/6" rear, w/Hayes levers | Shimano M520 clipless pedals **SIZES** XS (13") | MD (17") **COLOR** Metallic Black + Metallic Green





↑ **CAKE 3 GS**

**FRAME** Platinum Series ZR9000 double-butted aluminum | Genesis Geometry | 6061 T6 aluminum swingarm | Carbon fiber seatstays | Disc specific | Sealed cartridge bearings | 4" travel | **WHEELS** Bontrager Superstock disc-compatible wheelsystem w/OSB rear | Bontrager ACX 26x2.2 folding tires | **SUSPENSION** Manitou Skarab Elite Diva | 100mm travel | Manitou Swinger 3-Way Air w/SPV | **COMPONENTRY** Shimano LX SGS rear derailleur + LX shifters + front derailleur | Bontrager Select 44/32/22 crank | Hayes HFX-9 WSD hydraulic disc brakes w/Hayes WSD levers | Shimano M520 clipless pedals | **SIZES** XS (13") | MD (17") | **COLOR** Metallic Light Blue + Metallic Silver

## ↓ BIG SUR GS

aluminum main frame w/carbon composite seat and chainstays | Genesisisters Geometry **WHEELS** Bontrager Superstock disc-compatible wheelsystem | Bontrager Jones XR 26x2.2 tires **SUSPENSION** Manitou Skareb Super Diva w/TPC Lock-Out | 100mm travel **COMPONENTRY** Shimano XT rear derailleur + LX shifters + front derailleur | Bontrager Race 44/32/22 crank | Hayes HEX-9 hydraulic disc brakes w/Hayes levers | Shimano M505 clipless pedals **SIZES** XS (13") | SM (15.5") | MD (17.5") **COLOR** Moritz Sky Blue

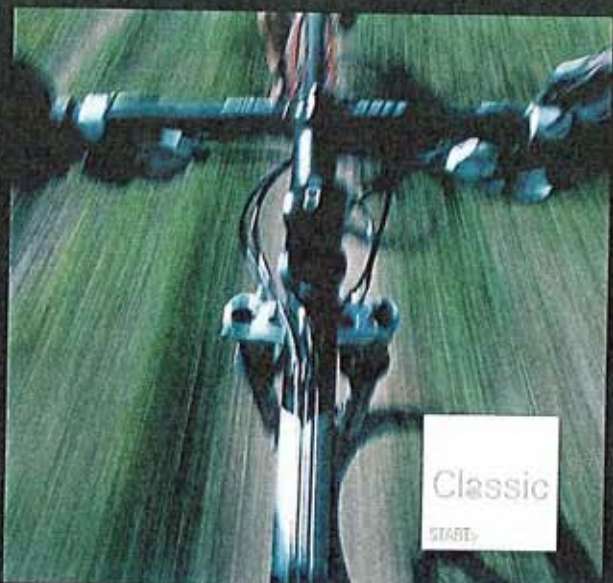


## ↑ TASSAJARA GS

butted aluminum | Genesisisters Geometry **WHEELS** Shimano M525 Disc hubs | WTB Dual Duty rims | Bontrager Jones XR 26x2.25 front/2.2 rear tires **SUSPENSION** Manitou Axel Elite w/TPC Lock-Out | 100mm travel **COMPONENTRY** Shimano LX rear derailleur + Deore shifters + front derailleur | Bontrager Select 44/32/22 crank | Promax V brakes w/alloy levers | Alloy platform pedals **SIZES** XS (13") | SM (15.5") | MD (17.5") **COLOR** Metallic Silver

Genesisisters





Classic

START

**Simple, reliable mountain bikes.** But they are Fishers through and through. Durable. Fun to ride. Easy to maintain. Loaded with the features and technology that have made Gary a bike-building legend. And they're priced to be budget friendly.





← ↑ **ADVANCE**

**FRAME** Silver Series aluminum ATB **WHEELS**  
Alloy QR front hub w/Shimano RM30 rear hub | Matrix 550 rims | Bontrager Connection Trail 26x2.0 tires **SUSPENSION** RST Capa  
T5 | 75mm travel **COMPONENTRY** Shimano Alivio rear derailleur + EF29 shifters + C050 front derailleur | SR XCC-150 42/34/24  
crank | Tektro V brakes w/alloy levers | Nylon platform pedals **SIZES** XS (13") | SM (16") | MD (18") | LG (19.5") | XL (21.5") |  
Stepthrough SM (16") | Stepthrough MD (18") **COLORS** Metallic Black + Metallic Blue | Metallic Orange

↓ ↓ **TARPOON**

**FRAME** Silver Series aluminum ATB **WHEELS** Alloy QR hubs | Matrix 550 rims | Bontrager Connection Trail 26x2.0 tires **SUSPENSION** RST 191C5 | 63mm travel **COMPONENTRY** Shimano Acara rear derailleur + EF29 shifters + C051 front derailleur | SR XCC-100 48/38/28 crank | Tektro V brakes w/alloy levers | Nylon platform pedals **SIZES** XS (13") | SM (16") | MD (18") | LG (19.5") | XL (21.5") | Stepthrough SM (16") | Stepthrough MD (18") **COLORS** Metallic Black | Metallic Light Silver + Metallic Medium Silver





↑↑MAKO

**FRAME** Silver Series aluminum ATB **WHEELS** Alloy QR hubs | Matrix 550 rims | Bontrager Connection Trail 26x2.0 tires **FORK** Hiten ATB **COMPONENTRY** Shimano TX50 rear derailleur + EF79 shifters + C061 front derailleur | SR XCC-100 48/38/28 crank | Tektro V brakes w/alloy levers | Nylon platform pedals **SIZES** XS (13") | SM (16") | MD (18") | LG (19.5") | XL (21.5") | Stepthrough SM (16") | Stepthrough MD (18") **COLOR** Metallic Red | Metallic Light Silver + Metallic Blue

Classic





**Road bike fast and mountain bike durable.** Fisher Dual Sport bikes are a lot like the man who created them. Just like Gary, they love to wander — off road, or on. Featuring fast 700c wheels, Dual Sport bikes are light, efficient, and oh so very versatile. If you had to have only one bike, this would be the one.

**MONTARE →**

**FRAME:** Platinum Series Z9000, internally butted aluminum | **GENESIS:** 29" Geometry  
**WHEELS:** Bontrager Superstock 29" disc-specific wheelsystem w/OSB rear | **IPC:**  
 Mylon CX Slick 700x42c tires | **SUSPENSION:** Manitou Switch Elite | 75mm travel  
**COMPONENTS:** Shimano XT SGS rear derailleur + LX shifters + Deore front  
 derailleur | Bontrager Select 48/36/26 crank | Avd BB7 mechanical disc brakes  
 w/Avd F15 levers | Shimano M505 clipless pedals | **SIZES:** SM (15.5") | MD (17.5") |  
 LG (19") | XL (21") | **COLOR:** Metallic Silver



**UTOPIA →**

**FRAME:** Gold Series 6061 T6, internally butted aluminum | **GENESIS:** 29" Geometry  
**WHEELS:** Shimano M505 Disc hubs | V118 Speed Disc rims | Mylon CX Slick  
 700x42c tires | **SUSPENSION:** RS Mtno GPS | 50mm travel | **COMPONENTS:**  
 Shimano XT rear derailleur + Deore shifters + front derailleur | Bontrager Select  
 48/36/26 crank | Avd BB5 mechanical disc brakes w/Avd levers | Alloy ATB  
 pedals | **SIZES:** SM (15.5") | MD (17.5") | LG (19") | XL (21") | **COLOR:** Metallic Blue



### NIRVANA S →

**FRAME** Silver Series aluminum hybrid **WHEELS** Alloy QR front hub w/Shimano RM60 rear hub | WTB Dual Duty rims | Mythos CX Slick 700x42c tires **SUSPENSION** RS Mstro GPS | 50mm travel **COMPONENTRY** Shimano Deore rear derailleur + Alivio shifters + C102 front derailleur | Shimano T303 48/38/28 crank w/CG | Shimano M420 V brakes w/alloy levers | Alloy ATB pedals **SIZES** SM (15") | MD (17.5") | LG (20") | XL (22.5") | Stepthrough SM (15") | Stepthrough MD (17.5") | Stepthrough LG (20") **COLOR** Metallic Light Silver + Metallic Red



### ZEBRANO S →

**FRAME** Silver Series aluminum hybrid **WHEELS** Alloy QR front hub w/Shimano RM60 rear hub | WTB Dual Duty rims | Mythos CX Slick 700x42c tires **SUSPENSION** RST CT FREE T5 | 50mm travel **COMPONENTRY** Shimano Alivio rear derailleur + EF29 shifters + C102 front derailleur | Shimano TX71 48/38/28 crank w/CG | Tekro V brakes w/alloy levers | Dual-density platform pedals **SIZES** SM (15") | MD (17.5") | LG (20") | XL (22.5") | XXL (25") | Stepthrough SM (15") | Stepthrough MD (17.5") | Stepthrough LG (20") **COLOR** Metallic Warm Silver + Metallic Black



### TIBURON S →

**FRAME** Silver Series aluminum hybrid **WHEELS** Alloy QR hubs | Matrix 750 rims | Mythos CX Slick 700x42c tires **SUSPENSION** RST CT FREE C5 | 50mm travel **COMPONENTRY** Shimano Acera rear derailleur + EF29 shifters + C102 front derailleur | SR XCC-100 48/38/28 crank w/CG | Tekro V brakes w/alloy levers | Dual-density platform pedals **SIZES** SM (15") | MD (17.5") | LG (20") | XL (22.5") | Stepthrough SM (15") | Stepthrough MD (17.5") | Stepthrough LG (20") **COLOR** Metallic Warm Silver + Metallic Blue



NIRVANA AND ZEBRANO  
ARE ALSO AVAILABLE WITH A RIGID FORK.  
SEE PAGE 47 FOR DETAILS.





**Take the easy way out.** Fisher Sport Utility Bikes are just the thing for folks who crave comfort, convenience, and extra utility. They're mountain bikes ready for the urban assault, featuring softer saddles, an upright riding position and the coolest slick tires on the planet. Add in our user-friendly Accessories Port™ and Quick Attach Mount for kid trailers and you'll realize that Gary has thought of everything.



↑ **CRONUS**

**FRAME** Gold Series 6061 T6 internally and externally butted aluminum | **WHEELS** Genesis Geometry Shimano M475 Disc hubs | WTB Speed Disc rims | Bontrager Hank Semi-Slick 26x2.2 tires | **FORK** Bontrager Switchblade 26" | **COMPONENTRY** SRAM X.7 rear derailleur + X-7 Trigger shifter | Bontrager 3BT crank | Avid BB7 mechanical disc brakes w/Avid FRS levers | Alloy platform pedals | **SIZES** XS (13") | SM (15.5") | MD (17.5") | LG (19") | XL (21") | **COLOR** Gloss Black



↓ NAPA

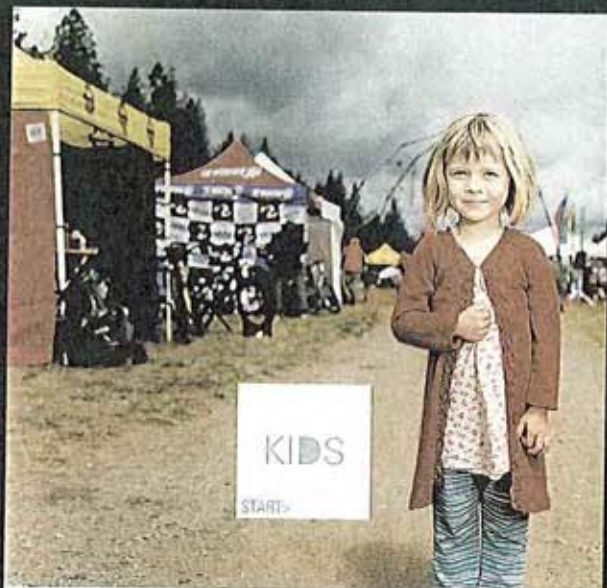
**FRAME** Silver Series aluminum SUB **WHEELS** Alloy QR front hub  
w/Shimano RM60 rear hub | Matrix 550 rims | Bontrager Comfort 26x1.95 tires **SUSPENSION** RST Gila T5 | 63mm travel **COMPONENTRY** Shimano Alivio rear derailleur +  
EF29 shifters + C102 front derailleur | Shimano TX71 48/38/28 crank w/CG | Tektro V brakes w/alloy levers | Dual-density platform pedals **SIZES** SM (14.5") | MD (16.5") |  
LG (18.5") | XL (21") | Stepthrough SM (14.5") | Stepthrough MD (16.5") | Stepthrough LG (18.5") **COLOR** Metallic Silver + Brushed Aluminum



↑ CAPITOLA

**FRAME** Silver Series aluminum SUB **WHEELS** Alloy QR hubs |  
Matrix 550 rims | Bontrager Comfort 26x1.95 tires **SUSPENSION** RST Capa C5 | 63mm travel **COMPONENTRY** Shimano Acera rear derailleur + SRAM MRX Plus shifters +  
Shimano C051 front derailleur | SR XCC-100 48/38/28 crank w/CG | Tektro V brakes w/alloy levers & bell | Dual-density platform pedals **SIZES** SM (14.5") | MD (16.5") |  
LG (18.5") | XL (21") | Stepthrough SM (14.5") | Stepthrough MD (16.5") | Stepthrough LG (18.5") **COLOR** Metallic Warm Silver + Red





**Gary knows kids ('cause he still is one).**  
**Gary knows parents ('cause he still is one).**  
 He knows kids want fun and function. Parents want durability, safety, and value. Gary's kids' bikes are high performance, yet built to last, built to grow, and most important, built to be safe. With features like adjustable components, shorter-reach brakes, and a lower standover height, these bikes aren't just super fun, they're super smart too. Kids' stuff? We think not.



↑↑ **TYRO**

**FRAME** Fisher Great Fit aluminum **WHEELS** 24" alloy rims + hubs | Shimano 7-speed freewheel | Bontrager Connection multitrack tires **SUSPENSION** Great Fit suspension fork | 50mm travel **COMPONENTRY** Great Fit over-adjustable stem + padded O-zone saddle + pedals | SRAM 3.0 rear derailleur + 21-speed shifters | Great Fit adjustable alloy crank | Cartridge BB | Linear pull brakes w/Great Fit levers **COLORS** Metallic Blue (boys) | Purple Metallic (girls)



↓↓ COSMO

**FRAME** Fisher Great Fit aluminum **WHEELS** 20" alloy rims + hubs | 6-speed freewheel | Bontrager Connection multitrack tires **SUSPENSION** Great Fit suspension fork | 50mm travel **COMPONENTRY** Great Fit over-adjustable stem + padded O-zone saddle + pedals | Shimano TY-23 rear derailleur + SRAM MXX 6-speed shifters | Great Fit adjustable crank | Sealed BB | Linear pull brakes w/Great Fit levers **COLORS** Metallic Red (boys') | Dark Metallic Pink (girls')



↑↑ ASTRO

**FRAME** Fisher Great Fit aluminum **WHEELS** 20" alloy rims | Coaster brake & rear hand brake | Multitrack tires **COMPONENTRY** Great Fit adjustable saddle + pedals + grips + handlebar | Painted steel chainguard | Stem & handlebar pads | Moto fender on boys' | Basket & tassels on girls' **COLORS** Metallic Blue (boys') | Pink Metallic (girls')





↑↑ **GAMMA RAY**

brake | Multitrack tires **COMPONENTRY** Great Fit adjustable saddle + pedals + grips + handlebar | Great Fit Super Strong training wheels | Painted steel chainguard | Stem & handlebar pads | Moto fender on boys' | Basket & tassels on girls' **COLORS** Metallic Red (boys') | Pink Metallic (girls')



↑↑ **SUN SPOT**

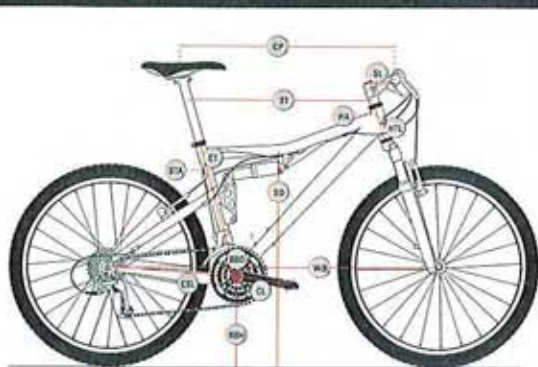
Multitrack tires **COMPONENTRY** Great Fit adjustable saddle + pedals + grips + handlebar | Great Fit Super Strong training wheels | Plastic fully enclosed chainguard | Stem & handlebar pads | Basket & tassels on girls' | Moto fender on boys' **COLORS** Pink Metallic (girls') | Metallic Black (boys')



↑↑ **STAR FISH**

steel rims | Coaster brake | Balloon cruiser tires **COMPONENTRY** Great Fit adjustable saddle + pedals + grips + handlebar | Great Fit Super Strong training wheels | Plastic fully enclosed chainguard | Cruiser fenders **COLORS** Metallic Blue + Metallic Silver (boys') | Pink Metallic + Pearl White (girls')

# Geometry Tables



TERM	ABBV.	UNIT	GEOMETRY GLOSSARY
STANDOVER	ST	"	The vertical distance from the ground to the point on the top tube where you straddle the bike.
EFFECTIVE TOP TUBE	TT	"	The horizontal measure from the center of the headset to the center of the seatpost. The most important measurement when buying a bike, because it cannot be changed.
COCKPIT LENGTH	CF	"	The horizontal measure from the center of the handlebar to the center of the seatpost. This is where you spend your time (The next two measurements show how it can be adjusted).
MINIMUM COCKPIT	minCP	"	The shortest the cockpit can be made by changing the stem to the shortest one available.
MAXIMUM COCKPIT	maxCP	"	The longest the cockpit can be made by changing the stem to one which is 30mm longer than original—the maximum recommended to retain optimum handling.
STEM LENGTH	SL	mm	The original stem, measured from the center of the steerer tube to the center of the handlebar.
CRANK LENGTH	CL	mm	The distance from the center of the bottom bracket to the center of the pedal axle. A rider with long legs can benefit from longer cranks.
HEADTUBE LENGTH	HTL	mm	The distance between the upper and lower headsets. Affects how high your handlebar is relative to your saddle.
HEAD ANGLE	HA	°	The angle of headtube to the ground. Tailored to optimize steering precision on each frame size.
SEAT TUBE ANGLE	STA	°	The angle of seat tube to the ground. Tailored to optimize power transmission on each frame size.
EFFECTIVE CHAINSTAY LENGTH	ECL	mm	The distance from the center of the bottom bracket to the center of the rear axle.
BOTTOM BRACKET HEIGHT*	BBH	mm	The vertical distance from the center of the bottom bracket to the ground. Expresses clearance of the frame over obstacles.
BOTTOM BRACKET DROP*	BBD	mm	The vertical distance the bottom bracket is below an imaginary horizontal line drawn through the axles. The greater the bottom bracket drop, the lower the rider's center of gravity.
WHEELBASE	WB	mm	The distance between the axles. Tailored to optimize weight distribution on each frame size.

\*All riding and geometry specifications are calculated with a standard wheel size and fork axle to axle. Larger frame sizes as well as different fork lengths will change the dimensions in these charts.

MODEL	SIZE	CAKE 1 ■LX   CAKE 2 ■LX   CAKE 3 ■LX   CAKE 4 ■LX				CAKE 3 ■LX GS		CAKE 1   CAKE 2   CAKE 3   CAKE 4				CAKE 3 GS	
		SM (15.5")	MD (17.5")	LG (19")	XL (21")	XS (13")	MD (15.5")	SM (15.5")	MD (17.5")	LG (19")	XL (21")	XS (13")	MD (17.5")
STANDOVER	ST	29.2	30.4	31.6	33.1	27.2	30.1	28.4	29.6	30.6	32.2	25.4	29.9
EFFECTIVE TOP TUBE	TT	22.9	23.9	24.7	25.5	22.3	23.4	22.9	23.9	24.7	25.5	22.3	23.4
COCKPIT LENGTH	CF	24.9	25.5	27.9	29.9	24.4	25.4	24.8	25.5	27.9	28.5	24.4	25.4
MINIMUM COCKPIT	minCP	24.8	25.2	27.7	29.7	24.2	25.2	24.8	25.2	27.7	29.7	24.2	25.2
MAXIMUM COCKPIT	maxCP	25.4	27.0	29.4	29.4	25.0	26.4	25.4	27.0	29.4	29.4	25.0	26.4
STEM LENGTH	SL	75	90	105	126	75	75	75	90	105	126	75	75
CRANK LENGTH	CL	170	175	175	175	170	175	170	175	175	175	170	175
HEADTUBE LENGTH	HTL	90	126	122	145	90	126	90	126	122	145	90	126
HEAD ANGLE	HA	72	72.5	72.5	72.5	72.0	72.5	72	72.5	72.5	72.5	72.0	72.5
SEAT TUBE ANGLE	STA	72.5	72.5	72.5	72.5	72.5	72.5	72.5	72.5	72.5	72.5	72.5	72.5
EFFECTIVE CHAINSTAY LENGTH	ECL	417	417	417	417	417	417	417	417	417	417	417	417
BOTTOM BRACKET HEIGHT*	BBH	343.2	343.2	343.2	343.2	343.2	343.2	322.5	322.5	322.5	322.5	322.5	322.5
BOTTOM BRACKET DROP*	BBD	-12	-12	-12	-12	-12	-12	8	8	8	8	8	8
WHEELBASE	WB	1272.2	1290.5	1312.2	1327.7	1264.8	1278.5	1272.2	1290.5	1312.2	1327.7	1264.8	1278.5

\*Before recommended 25-30% sag in.

MODEL	SIZE	KING FISHER 1   KING FISHER 2		
		SM (15.5")	MD (17.5")	LG (19")
STANDOVER	ST	29.3	30.5	31.5
EFFECTIVE TOP TUBE	TT	22.4	23.0	24.3
COCKPIT LENGTH	CF	24.4	24.9	27.1
MINIMUM COCKPIT	minCP	24.4	24.8	26.9
MAXIMUM COCKPIT	maxCP	25.2	25.7	27.1
STEM LENGTH	SL	50	50	30
CRANK LENGTH	CL	132	115	125
HEADTUBE LENGTH	HTL	115	115	125
HEAD ANGLE	HA	67	67	67
SEAT TUBE ANGLE	STA	73	73	73
EFFECTIVE CHAINSTAY LENGTH	ECL	438	438	438
BOTTOM BRACKET HEIGHT	BBH	324.5	324.5	324.5
BOTTOM BRACKET DROP	BBD	24.5	24.5	24.5
WHEELBASE	WB	1125.1	1142.3	1173.2

# Geometry Tables continued

MODELS	SIZES	GEM I BITTER I OPIE I MULLET					
		XS(13")	SM(15.5")	MD(17.5")	LG(19.5")	XL(21.5")	
STANDOVER	SO	28.3	27.5	28.7	29.8	30.8	
EFFECTIVE TOP TUBE	TT	21.4	22.5	23.6	24.4	25.1	
COCKPIT LENGTH	CP	23.4	24.0	25.4	27.2	27.8	
MINIMUM COCKPIT	minCP	23.4	24.0	25.6	26.4	27.1	
MAXIMUM COCKPIT	maxCP	25.0	25.0	26.4	27.2	28.8	
STEM LENGTH	SL	mm	50	50	70	70	70
CRANK LENGTH	CL	mm	170	170	175	175	170
HEADTUBE LENGTH	HTL	mm	80	105	117.5	130	145
HEAD ANGLE	HA	°	32	32	32	32	32
SEATTUBE ANGLE	STA	°	31	31	31	31	31
EFFECTIVE CHAINSTAY LENGTH	CSL	mm	413	413	413	413	413
BOTTOM BRACKET HEIGHT	BBH	mm	317.5	317.5	327.5	347.5	317.5
BOTTOM BRACKET DROP	BBOD	mm	28	28	28	28	28
WHEELBASE	WB	mm	1004.0	1034.0	1074.3	1101.3	1100.0

MODELS	SIZES	SUGAR 292 I SUGAR 293				SUGAR4+			
		SM(15.5")	MD(17.5")	LG(19.5")	XL(21.5")	SM(15.5")	MD(17.5")	LG(19.5")	XL(21.5")
STANDOVER	SO	28.9	27.8	28	29.2	28.1	28.7	29.4	30.0
EFFECTIVE TOP TUBE	TT	23.2	23.9	24.7	25.5	22.7	23.9	24.7	25.5
COCKPIT LENGTH	CP	25.1	26.6	28.0	28.7	24.6	26.7	28.0	28.7
MINIMUM COCKPIT	minCP	24.9	26.4	27.7	28.5	24.4	26.4	27.7	28.5
MAXIMUM COCKPIT	maxCP	25.8	27.2	28.5	29.3	25.2	27.2	28.5	29.2
STEM LENGTH	SL	mm	75	90	126	126	75	90	126
CRANK LENGTH	CL	mm	170	175	175	175	170	175	175
HEADTUBE LENGTH	HTL	mm	80	80	90	110	90	108	125
HEAD ANGLE	HA	°	31.5	31.5	31.5	31.5	31	31.5	31.5
SEATTUBE ANGLE	STA	°	32.5	32.5	32.5	32.5	32.5	32.5	32.5
EFFECTIVE CHAINSTAY LENGTH	CSL	mm	450	460	460	460	417	417	417
BOTTOM BRACKET HEIGHT	BBH	mm	315	315	315	315	312.4	312.4	312.4
BOTTOM BRACKET DROP	BBOD	mm	50	50	50	50	22.8	22.8	22.8
WHEELBASE	WB	mm	1052.0	1012.4	1130.0	1150	1056.0	1082.0	1123.3

MODELS	SIZES	PARAGON I X-CALINER I RIG I MONTANA I UTOPIA				
		SM(15.5")	MD(17.5")	LG(19.5")	XL(21.5")	
STANDOVER	SO	28.8	29.9	30.8	31.2	
EFFECTIVE TOP TUBE	TT	23.2	24	24.7	25.5	
COCKPIT LENGTH	CP	25.2	26.8	28.8	29.6	
MINIMUM COCKPIT	minCP	25.5	27.5	28.3	29	
MAXIMUM COCKPIT	maxCP	26.8	28.1	29.4	30.2	
STEM LENGTH	SL	mm	75	90	126	126
CRANK LENGTH	CL	mm	170	175	175	175
HEADTUBE LENGTH	HTL	mm	90	90	90	126
HEAD ANGLE	HA	°	32.5	31.0	31.5	31.5
SEATTUBE ANGLE	STA	°	34.0	34.0	33.5	33.0
EFFECTIVE CHAINSTAY LENGTH	CSL	mm	440	440	440	440
BOTTOM BRACKET HEIGHT	BBH	mm	315	315	315	315
BOTTOM BRACKET DROP	BBOD	mm	50	50	50	50
WHEELBASE	WB	mm	1028.2	1128.2	1112.4	1124.4

MODELS	SIZES	ZIGGURAT I RIG SUN & BISC I HOK KOO E KOO I TASSAJARA & BISC I MARLIN I WAHOO I CRONUS					RIG SUN_GS I TASSAJARA_GS		
		XS(13")	SM(15.5")	MD(17.5")	LG(19.5")	XL(21.5")	SM(15.5")	MD(17.5")	LG(19.5")
STANDOVER	SO	28.8	27.8	29.0	30.1	31.8	28.6	27.8	29.0
EFFECTIVE TOP TUBE	TT	21.7	22.5	23.9	24.7	25.5	21.7	22.3	23.4
COCKPIT LENGTH	CP	24.1	25.8	27.4	28.8	29.6	24.1	25.2	25.9
MINIMUM COCKPIT	minCP	23.5	25.3	26.8	28.3	29.0	23.5	24.8	25.7
MAXIMUM COCKPIT	maxCP	24.7	26.4	27.0	28.4	30.3	24.7	25.8	26.9
STEM LENGTH	SL	mm	60	75	90	126	126	60	75
CRANK LENGTH	CL	mm	170	170	175	175	175	170	175
HEADTUBE LENGTH	HTL	mm	90	90	126	126	126	126	126
HEAD ANGLE	HA	°	32.0	32.5	32.0	31.0	31.0	32.0	32.5
SEATTUBE ANGLE	STA	°	34.0	33.5	33.5	33.0	32.5	34.0	33.5
EFFECTIVE CHAINSTAY LENGTH	CSL	mm	413	413	413	413	413	413	413
BOTTOM BRACKET HEIGHT	BBH	mm	312	317	317	317	325	312	317
BOTTOM BRACKET DROP	BBOD	mm	35	30	30	30	25	35	30
WHEELBASE	WB	mm	1032.9	1054.1	1078.2	1091.8	1127.6	1102.7	1039.0

MODELS	SIZES	ADVANCE   TAMPON   MAKO					WOMEN'S STEPHENSON FRAMES	
		XL(17')	M(16.5')	M(16.5')	L(17.5')	XL(18')	SM(15')	M(16.5')
STANDOVER	SO	25.4	27.6	29.3	30.4	31.9	23.8	23.8
EFFECTIVE TOP TUBE	TT	21.5	22.4	23.1	23.8	24.5	21.6	23.0
COCKPIT LENGTH	CP	23.0	24.2	25.6	26.3	27.5	24.0	25.3
MINIMUM COCKPIT	minCP	23.1	24.3	25.6	26.3	27.6	23.4	24.7
MAXIMUM COCKPIT	maxCP	23.4	24.7	26.0	26.7	28.0	24.6	25.9
STEM LENGTH	SL	90	90	110	110	130	95	80
CRANK LENGTH	CL	170	170	175	175	175	170	170
HEADTUBE LENGTH	HTL	125	125	145	145	125	125	145
HEAD ANGLE	HA	72.5	71	71.5	71.5	71.5	71	71.0
SEATUBE ANGLE	STA	74.5	74	74	73.5	73.5	74	74
EFFECTIVE CHAINSTAY LENGTH	CSL	412	412	412	412	412	420	415
BOTTOM BRACKET HEIGHT	BBH	258	251	255	255	255	241	255
BOTTOM BRACKET DROP	BBQ	45.0	42.0	38.0	38.0	38.0	42.0	38.0
WHEELBASE	WB	1021.5	1027.3	1029.8	1060.9	1062.2	1028.4	1022.8

MODELS	SIZES	NIRVANA & S   ZEBRANO & S   TIMUNON & S				WOMEN'S STEPHENSON FRAMES	
		SM(15')	M(16.5')	L(17.5')	XL(18')	XS(15')	M(16.5')
STANDOVER	SO	23.0	23.8	30.3	32.2	23.5	23.7
EFFECTIVE TOP TUBE	TT	21.4	21.6	22.2	22.8	21.4	21.5
COCKPIT LENGTH	CP	23.1	23.3	23.9	24.7	22.7	23.2
MINIMUM COCKPIT	minCP	23.3	23.5	24.1	24.6	22.3	23.4
MAXIMUM COCKPIT	maxCP	23.4	23.6	24.3	25.0	22.6	23.5
STEM LENGTH	SL	105	105	120	120	90	110
CRANK LENGTH	CL	170	170	170	170	170	170
HEADTUBE LENGTH	HTL	90	125	125	135	125	125
HEAD ANGLE	HA	72	72.5	72.5	71.5	72	72.5
SEATUBE ANGLE	STA	74	74	73	73	74	74
EFFECTIVE CHAINSTAY LENGTH	CSL	440	440	440	440	440	440
BOTTOM BRACKET HEIGHT	BBH	260.9	260.9	260.9	260.9	260.9	261
BOTTOM BRACKET DROP	BBQ	65.0	65.0	65.0	65.0	65.0	64.8
WHEELBASE	WB	1055.8	1066.3	1061.9	1063.4	1055.8	1062.7

MODELS	SIZES	NAPA   CAPITOLA				WOMEN'S STEPHENSON FRAMES	
		SM(14.5')	M(16.5')	L(17.5')	XL(18')	SM(14.5')	M(16.5')
STANDOVER	SO	25.9	27.4	29.1	30.3	22.2	25.4
EFFECTIVE TOP TUBE	TT	22.5	21.7	22.8	23.4	20.8	21.7
COCKPIT LENGTH	CP	23.0	23.8	27.7	28.3	25.0	27.7
MINIMUM COCKPIT	minCP	22.8	23.6	24.8	25.5	22.8	24.5
MAXIMUM COCKPIT	maxCP	23.8	25.8	28.0	28.7	25.8	28.0
STEM LENGTH	SL	105	105	125	125	105	125
CRANK LENGTH	CL	170	170	170	170	170	170
HEADTUBE LENGTH	HTL	135	155	215	235	135	215
HEAD ANGLE	HA	72.5	72.5	72.5	72.5	72.5	72.5
SEATUBE ANGLE	STA	72.5	72.5	72.5	72.5	72.5	72.5
EFFECTIVE CHAINSTAY LENGTH	CSL	423	423	423	423	423	423
BOTTOM BRACKET HEIGHT	BBH	261	267	261	267	261	269
BOTTOM BRACKET DROP	BBQ	48.0	48.0	48.0	48.0	50.0	50.0
WHEELBASE	WB	1010.9	1017.7	1058.9	1074.6	1010.9	1020.9

## GARY FISHER LIMITED LIFETIME WARRANTY

Gary Fisher Bicycles provides each original retail purchaser of the bicycle a lifetime warranty against defects in materials and workmanship in the bicycle frame and rigid fork when purchased from an authorized Gary Fisher dealer. Gary Fisher Bicycles likewise warrants all original parts on the bicycle, excluding suspension forks and rear shock absorbers, for a period of one year from the date of purchase. Suspension forks and rear shock absorbers shall be covered by the stated warranty of their original manufacturers. Paint and decals are warranted for one year. This warranty is expressly limited to the repair or replacement of a defective frame, fork, or defective part and is the sole remedy of the warranty. This warranty applies only to the original owner and is not transferable. Claims under this warranty must be made through an authorized Gary Fisher dealer. Proof of purchase is required. A warranty registration card must be completed and received by Gary Fisher Bicycles before a warranty claim may be processed. This warranty covers bicycles and components outside the United States only if purchased through an authorized international Gary Fisher distributor or Gary Fisher dealer within the country of purchase.

The warranty does not cover normal wear and tear, improper assembly or follow-up maintenance, installation of parts or accessories not originally intended or compatible with the bicycle as sold, damage or failure due to accident, misuse, or neglect, or modification of the frame, fork, or components. Gary Fisher Bicycles shall not be responsible for incidental or consequential damages. Some states do not allow the exclusion of incidental or consequential damages, so the above exclusion may not apply to you. This warranty gives the consumer specific legal rights, and those rights may vary from place to place. This warranty does not affect the statutory rights of the consumer.

All photos, illustrations, colors, weights, and specifications contained in this catalog are based on the latest production information at the time of publication. Gary Fisher reserves the right to make changes at any time, without notice, in colors, materials, equipment, specifications, and models. Any variations in colors shown may be due to the reproductive variations of the printing process. Photos may include non-U.S. equipment. Some models may be shown with optional equipment.

All Gary Fisher bikes are sold exclusively through our network of Authorized Dealers who we entrust with professional assembly and service of your bicycle. Gary Fisher Bicycles extends a Limited Lifetime Warranty on every frame. Warranty duration and detail may differ by frame type and/or by country.

All specifications are subject to change without notice. Gary Fisher Mountain Bikes, Gary Fisher, the double mountain logo, Cate, Sugar, Garciasisters, GCLV, 4x11-link, 4-link, Accessories Port, Cate 3, Cate 2, Cate 3, Cate 4, King Fisher, King Fisher 1, King Fisher 2, Biggins, Goli, Blitzer, Opie, Mullet, Super4, Sugar 292, Sugar 293, Rig, Dual Sport, Montana, Eggplant, Big Sur, Moo Koo E Koo, Tassajara, Merlin, Wahoo, Adventure, Tarpon, Utopia, Nirvana, Zebano, Tiburon, Cronus, Napa, Capitola, Tys, Cooma, Aetna, Gamma Ray, and Sun-Spot are trademarks of Trek Bicycle Corporation. All rights reserved. ©2004 Trek Bicycle Corporation. Copyright 2004 Trek Bicycle Corporation. All Rights Reserved. Fisher is a Registered Trademark of Trek Bicycle Corporation. US Patent Numbers: 5,445,438; 5,624,545; 5,931,544; 6,270,106; 6,497,642 and others pending.

The following riding practices increase your risk of injury: jumping your bicycle, performing bicycle stunts, severe off-road riding, downhill riding and any abnormal bike riding. Each of these conditions increases the stress on every part of your bicycle. Frames or parts under high stress may fatigue prematurely, causing them to fail and increasing the risk of injury to the rider. Avoid these riding practices to decrease your risk of injury.









MODEL	MAKO	MONTARE	UTOPIA	NIRVANA	NIRVANA S	ZEBRANO	ZEBRANO S	TIBURON S	CRONUS	NAPA	CAPITOLA	
FRAME	34	34	34	35	35	35	35	35	35	37	37	
COLOURS	Metallic Silver + Metallic Blue Metallic Red	Metallic Silver + Metallic Blue Metallic Red	Metallic Silver + Metallic Blue Metallic Red	Metallic Silver + Metallic Blue Metallic Red	Metallic Silver + Metallic Blue Metallic Red	Metallic Silver + Metallic Blue Metallic Red	Metallic Silver + Metallic Blue Metallic Red	Metallic Silver + Metallic Blue Metallic Red	Black Rock	Metallic Silver + Black Aluminium	Metallic Silver + Red	
SIZES	SM (14.5)   MD (17.3)   LG (19.1)   XL (21.5)   XXL (23.5)   Supersize SM (14.5)   Supersize MD (14.5)   MD (17.3)   LG (19.1)	SM (14.5)   MD (17.3)   LG (19.1)   XL (21.5)   XXL (23.5)   Supersize SM (14.5)   Supersize MD (14.5)   MD (17.3)   LG (19.1)	SM (14.5)   MD (17.3)   LG (19.1)   XL (21.5)   XXL (23.5)   Supersize SM (14.5)   Supersize MD (14.5)   MD (17.3)   LG (19.1)	SM (14.5)   MD (17.3)   LG (19.1)   XL (21.5)   XXL (23.5)   Supersize SM (14.5)   Supersize MD (14.5)   MD (17.3)   LG (19.1)	SM (14.5)   MD (17.3)   LG (19.1)   XL (21.5)   XXL (23.5)   Supersize SM (14.5)   Supersize MD (14.5)   MD (17.3)   LG (19.1)	SM (14.5)   MD (17.3)   LG (19.1)   XL (21.5)   XXL (23.5)   Supersize SM (14.5)   Supersize MD (14.5)   MD (17.3)   LG (19.1)	SM (14.5)   MD (17.3)   LG (19.1)   XL (21.5)   XXL (23.5)   Supersize SM (14.5)   Supersize MD (14.5)   MD (17.3)   LG (19.1)	SM (14.5)   MD (17.3)   LG (19.1)   XL (21.5)   XXL (23.5)   Supersize SM (14.5)   Supersize MD (14.5)   MD (17.3)   LG (19.1)	SM (14.5)   MD (17.3)   LG (19.1)   XL (21.5)   XXL (23.5)   Supersize SM (14.5)   Supersize MD (14.5)   MD (17.3)   LG (19.1)	SM (14.5)   MD (17.3)   LG (19.1)   XL (21.5)   XXL (23.5)   Supersize SM (14.5)   Supersize MD (14.5)   MD (17.3)   LG (19.1)	SM (14.5)   MD (17.3)   LG (19.1)   XL (21.5)   XXL (23.5)   Supersize SM (14.5)   Supersize MD (14.5)   MD (17.3)   LG (19.1)	SM (14.5)   MD (17.3)   LG (19.1)   XL (21.5)   XXL (23.5)   Supersize SM (14.5)   Supersize MD (14.5)   MD (17.3)   LG (19.1)
DETAIL FRAME	Frame Series 20000: extensively and externally treated aluminum   Series 20' Geometry	Gold Series 2001: 75% extensively and externally treated aluminum   Series 20' Geometry	Gold Series 2001: 75% extensively and externally treated aluminum   Series 20' Geometry	Gold Series 2001: 75% extensively and externally treated aluminum   Series 20' Geometry	Gold Series 2001: 75% extensively and externally treated aluminum   Series 20' Geometry	Gold Series 2001: 75% extensively and externally treated aluminum   Series 20' Geometry	Gold Series 2001: 75% extensively and externally treated aluminum   Series 20' Geometry	Gold Series 2001: 75% extensively and externally treated aluminum   Series 20' Geometry	Gold Series 2001: 75% extensively and externally treated aluminum   Series 20' Geometry	Gold Series 2001: 75% extensively and externally treated aluminum   Series 20' Geometry	Gold Series 2001: 75% extensively and externally treated aluminum   Series 20' Geometry	
SPRINGS	N/A	N/A	N/A	N/A	N/A	N/A	N/A	N/A	N/A	N/A	N/A	
FORK	Hydro AFB	Metric Fork Blue   20mm base	Hydro AFB	Comedy AFB	Hydro AFB	Comedy AFB	Comedy AFB	Hydro AFB	Navigator Switchtable 20'	Hydro AFB	Hydro AFB	
REAR SHOCK	N/A	N/A	N/A	N/A	N/A	N/A	N/A	N/A	N/A	N/A	N/A	
HEADSET	Aluminum, semi-cartridge, sealed	Aluminum, semi-cartridge, sealed	Aluminum, semi-cartridge, sealed	Aluminum, semi-cartridge, sealed	Aluminum, semi-cartridge, sealed	Aluminum, semi-cartridge, sealed	Aluminum, semi-cartridge, sealed	Aluminum, semi-cartridge, sealed	Aluminum, semi-cartridge, sealed	Aluminum, semi-cartridge, sealed	Aluminum, semi-cartridge, sealed	
ROTTOM BRACKET	SS Gyphre	SS Gyphre	SS Gyphre	SS Gyphre	SS Gyphre	SS Gyphre	SS Gyphre	SS Gyphre	SS Gyphre	SS Gyphre	SS Gyphre	
CRANKS	SHARC 108 40/20/28	Navigator Select 40/20/28	Navigator Select 40/20/28	Navigator Select 40/20/28	Navigator Select 40/20/28	Navigator Select 40/20/28	Navigator Select 40/20/28	Navigator Select 40/20/28	Navigator Select 40/20/28	Navigator Select 40/20/28	Navigator Select 40/20/28	
PIEDALS	Hydro platform	SHARC 108 40/20/28	SHARC 108 40/20/28	SHARC 108 40/20/28	SHARC 108 40/20/28	SHARC 108 40/20/28	SHARC 108 40/20/28	SHARC 108 40/20/28	SHARC 108 40/20/28	SHARC 108 40/20/28	SHARC 108 40/20/28	
FRONT DERAILLEUR	Shimano D81	Shimano D81	Shimano D81	Shimano D81	Shimano D81	Shimano D81	Shimano D81	Shimano D81	Shimano D81	Shimano D81	Shimano D81	
REAR DERAILLEUR	Shimano T800	Shimano T800	Shimano T800	Shimano T800	Shimano T800	Shimano T800	Shimano T800	Shimano T800	Shimano T800	Shimano T800	Shimano T800	
SWITCHES	Shimano EF29	Shimano EF29	Shimano EF29	Shimano EF29	Shimano EF29	Shimano EF29	Shimano EF29	Shimano EF29	Shimano EF29	Shimano EF29	Shimano EF29	
CASSETTE	SHARC 108   11-28   17 speed	SHARC 108   11-28   17 speed	SHARC 108   11-28   17 speed	SHARC 108   11-28   17 speed	SHARC 108   11-28   17 speed	SHARC 108   11-28   17 speed	SHARC 108   11-28   17 speed	SHARC 108   11-28   17 speed	SHARC 108   11-28   17 speed	SHARC 108   11-28   17 speed	SHARC 108   11-28   17 speed	
CHAIN	SHARC 108	SHARC 108	SHARC 108	SHARC 108	SHARC 108	SHARC 108	SHARC 108	SHARC 108	SHARC 108	SHARC 108	SHARC 108	
FRONT HUB	SHARC 108	SHARC 108	SHARC 108	SHARC 108	SHARC 108	SHARC 108	SHARC 108	SHARC 108	SHARC 108	SHARC 108	SHARC 108	
FRONT RIM	Alloy OR	SHARC 108	SHARC 108	SHARC 108	SHARC 108	SHARC 108	SHARC 108	SHARC 108	SHARC 108	SHARC 108	SHARC 108	
FRONT SPOKES	Alloy OR	SHARC 108	SHARC 108	SHARC 108	SHARC 108	SHARC 108	SHARC 108	SHARC 108	SHARC 108	SHARC 108	SHARC 108	
REAR HUB	Alloy OR	SHARC 108	SHARC 108	SHARC 108	SHARC 108	SHARC 108	SHARC 108	SHARC 108	SHARC 108	SHARC 108	SHARC 108	
REAR RIM	Alloy OR	SHARC 108	SHARC 108	SHARC 108	SHARC 108	SHARC 108	SHARC 108	SHARC 108	SHARC 108	SHARC 108	SHARC 108	
REAR SPOKES	Alloy OR	SHARC 108	SHARC 108	SHARC 108	SHARC 108	SHARC 108	SHARC 108	SHARC 108	SHARC 108	SHARC 108	SHARC 108	
FRONT TYRE	SHARC 108	SHARC 108	SHARC 108	SHARC 108	SHARC 108	SHARC 108	SHARC 108	SHARC 108	SHARC 108	SHARC 108	SHARC 108	
REAR TYRE	SHARC 108	SHARC 108	SHARC 108	SHARC 108	SHARC 108	SHARC 108	SHARC 108	SHARC 108	SHARC 108	SHARC 108	SHARC 108	
FRONT BRAKE	SHARC 108	SHARC 108	SHARC 108	SHARC 108	SHARC 108	SHARC 108	SHARC 108	SHARC 108	SHARC 108	SHARC 108	SHARC 108	
REAR BRAKE	SHARC 108	SHARC 108	SHARC 108	SHARC 108	SHARC 108	SHARC 108	SHARC 108	SHARC 108	SHARC 108	SHARC 108	SHARC 108	
BRAKE LEVER	SHARC 108	SHARC 108	SHARC 108	SHARC 108	SHARC 108	SHARC 108	SHARC 108	SHARC 108	SHARC 108	SHARC 108	SHARC 108	
HANDLEBAR	SHARC 108	SHARC 108	SHARC 108	SHARC 108	SHARC 108	SHARC 108	SHARC 108	SHARC 108	SHARC 108	SHARC 108	SHARC 108	
STEM	SHARC 108	SHARC 108	SHARC 108	SHARC 108	SHARC 108	SHARC 108	SHARC 108	SHARC 108	SHARC 108	SHARC 108	SHARC 108	
GROUP	SHARC 108	SHARC 108	SHARC 108	SHARC 108	SHARC 108	SHARC 108	SHARC 108	SHARC 108	SHARC 108	SHARC 108	SHARC 108	
SAFETY	SHARC 108	SHARC 108	SHARC 108	SHARC 108	SHARC 108	SHARC 108	SHARC 108	SHARC 108	SHARC 108	SHARC 108	SHARC 108	
SEATPOST	SHARC 108	SHARC 108	SHARC 108	SHARC 108	SHARC 108	SHARC 108	SHARC 108	SHARC 108	SHARC 108	SHARC 108	SHARC 108	