



1998

HARDWARE



and

SOFTWARE

1

Pace and Raceware simply the highest performance product range available


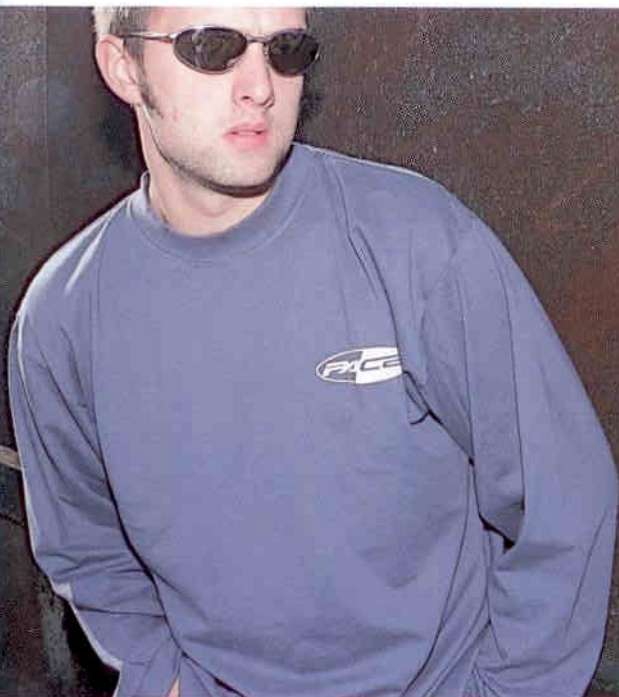


In the highly competitive field of performance mountain bike hardware and software Pace has become one of the industry's most respected design houses. State-of-the-art products with mind-blowing attention to detail, function and quality are the norm throughout our extensive product range.

Pace suspension forks and racing chassis head our hardware product line-up. Manufactured in carbon-fibre, aircraft-grade aluminium and the

2

performance



most refined carbon-steels, our products combine the best materials into fresh and unique designs. And equally you will see that the same 'no compromise' philosophy applies throughout our range, from hubs to lube and from chainrings to stems.



The prestigious Pace name is legendary for its performance hardware and more recently has carved out a name at the forefront of technical clothing design. Combining technical fabrics, progressive designs and quality manufacture our garments offer superb fit, function and comfort and blend subtle graphics within a wide colour range.

Add this to our on-going development programme, our commitment to product strength, reliability, servability and safety, you can appreciate that a Pace product really can make the difference.



RC-200-F7™

cross-country racing chassis

■ Handbuilt with pride and care by our craftsman engineers, no other Racing Hardtail cross-country mountain bike in the world achieves a comparable level of innovation, performance and quality as the Pace RC-200. After seven years of genuine race-bred development the new F7 offers breathtaking levels of control and is the preferred choice of many pro' and privateer racers worldwide.

■ The RC-200's reputation for lightning acceleration, climbing prowess, pin-point steering accuracy and total single track control is often envied but never bettered, and for 1998 we have further refined the '200, helping to maintain its legendary status.



■ Other standard features include detachable dropouts, disc-brake mounts and hydraulic hose-guides (no more zip ties- yippee!), unique high efficiency bolt-on seat clamp, anti-chainsuck system, E-type mech' mounting, and custom Crud-Guard™.



■ Ride fast, now stop fast with disc-brake mounts as standard.



To quote *mbr* Magazine:

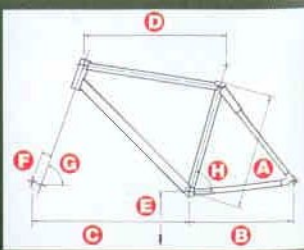
'WINNER – race bike category... One of the ultimate high-velocity hardtail race frames and forks. More than five years of continuous race-team development shows in this superb package. The best around? We think so.'

WINNER
race bike



specification

Weight	1.75Kg (3lb -12oz)
Material	Custom Pace Tubaset, 'Load-Dedicted' 7000 Series aluminium. Externally double-butted mainframe
Colour	Cool Blue or Satin Red
Option	Long wheelbase dropouts (not disc-brake compatible)



size in (cm)

	16.5 (42)	18 (45.5)	19 (49)	20.5 (52)
A	410	445	480	510
B	420	420	420	420
C	630	630	630	630
D	570	580	590	600
E	300	300	300	300
F	38	38	38	38
G	71°	71°	71°	71°
H	74°	74°	74°	74°

measurements in mm

RC-150 'monster'™

downhill racing fork

■ If an important feature of your racing equipment is that its named after your sister or your dog, thats cool. But if you aspire to a higher level the Pace RC-150 represents the pinnacle of long-travel suspension technology. This state of the art handbuilt racing fork provides 160mm of smooth, sensitive and totally adjustable travel.

■ Two beautiful CNC machined crowns, milled and pocketed from billet, rigidly clamp huge 32mm heat-treated carbon-steel stanchions, one housing a sophisticated large capacity Open Chamber oil damper, providing externally adjustable rebound and high-speed compression damping, whilst the opposite leg contains a silicone steel coil spring, custom wound by the masters of spring technology – Eibach. External spring-preload is provided along with an adjustable air spring for quick and easy fine tuning.



■ Whether hacking down a World-Cup run or slamming the doubles on your local track, the pure carbon lower tube and bridge assembly holds the 20mm pull-through spindle in a vice like grip. No binding, no flex. Other standard features include disc-brake mounts, easy maintenance Greaseport™ system, 140 or 160mm travel adjustment and aluminium steerer.

■ We race Factory Teams every weekend, so if you want a handbuilt 'works' suspension fork to beat the best, thats easy to tune, totally serviceable (not to mention the coolest looking fork on the planet) turn into a 'Monster' this weekend!



FINGERTIP CONTROL



Dial in high speed compression adjustment – maximum control for big hitters

25mm of coil-spring pre-load

■ Easy air spring tuning with a standard cycle pump. [Valve positioned behind right hand fork end]

Outer rebound dial fine tunes fork extension speed

Fork+Disc-Brake

KIT 1.

The most formidable Fork/Disc package available;

Pace RC-150 Fork including Hope 'Big-Un' complete Disc-Brake system (custom anodised). Unbeatable performance and value!



Fork+Disc-Brake

KIT 2.

The high performance 'front-end' package;

Pace RC-150 Fork including Magura Gustav M complete Disc-Brake system (inc spindle and mounting hardware). Killer function and value!



specification

Weight 4lb 6oz (1995grams)

Material Slider assembly: Carbon Fibre. Double crowns: Aircraft grade alloy. Damper: 6084-T6 Aluminium. Stanchion Tubes: Steel Custom Heat Treated Columbus

Fork length 515mm (axle to crown race seat)

Brakes Suitable for Hope 'Big-Un' or Magura 'Gustav M'

Note: RC-150 currently only available for disc-brakes.

Max combined headtube and headset dimension – 155mm.

RC-500-F1™

downhill racing chassis



■ The RC-500 like most advanced Pace engineered products was developed in competition. And because no other mountain biking company invests such a high percentage of its turnover into product and race development our customers are assured that our latest flagship machine is one of the most refined and technically advanced racing machines available. But hey, we like to enjoy our weekends as much as the next guy so we've made sure the RC-500 is incredibly

strong, reliable and requires little in the way of maintenance, so you spend more time having fun on the track and less time wielding the spanners in the workshop!

■ The RC-500 is hand fabricated from our own custom extruded 7000 series alloys, with the low profile mainframe neatly carrying all the rear suspension elements in a low-slung damper cell, contained between the main frame beams. And because the rising-rate damper linkage system is not a structural part of the frame (as in a motocross machine) you achieve the best of both worlds – incredible stiffness with a single, huge 28.6mm chromo* swingarm pivot **plus** sensitive initial suspension progressing through to high bottom out resistance – 160mm of travel later! And not content with that our engineers designed in an 'Easy Cam'™ linkage pivot, providing quick adjustment of the spring-rate.



97
PRODUCT
PACE
SOUTHERN SERIES
CHAMPION

■ Other standard features include load dedicated external frame butting, service free bearings, disc-brake ready design, detachable seat sub-frame (available in three position configurations), fork lock-stop, detachable drop-outs and oversized butted headtube.

	sml	med	lge
A	470	480	490
B	460	460	460
C	660	660	660
D	605	615	625
E	350	350	350
F	40	40	40
G	69°	69°	69°
H	68°	68°	68°

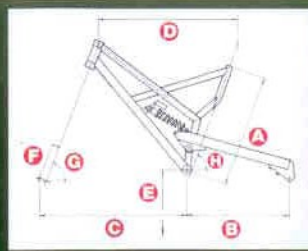
measurements in mm

■ Given that our super-rigid swingarm is clamped at the axle, swingarm pivot and again at the linkage, no other machine sprints and tracks like an RC-500. In the air, holding a line in G-outs or for charging off the line the RC-500 is incredibly stable and predictable.



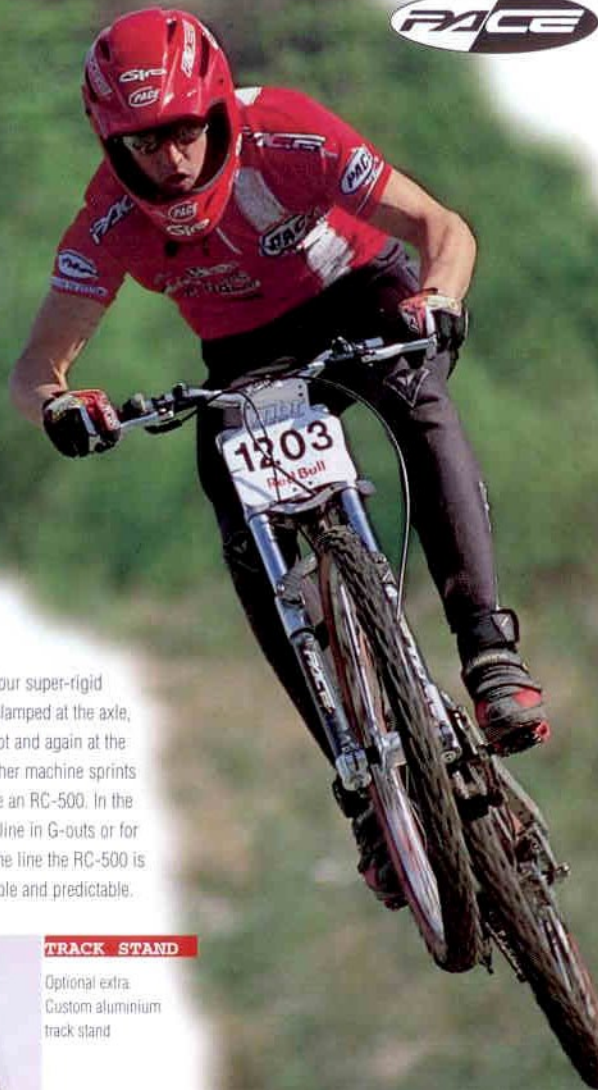
TRACK STAND

Optional extra
Custom aluminium
track stand



specification

Weight	3.5Kg (7lb 14oz)
Material	Custom Pace Tubeset, 'Load-Dedicated' 7000 Series aluminium.
Axle travel	160mm**
Damper	Fox Vanilla RX (57mm stroke).
Spring	Custom wound Eibach.
Colour	Satin Red/polished aluminium.



RC-36 Evo Pro-Class™

racing fork



■ Riders and magazines alike voted the RC-36 No1, and our new RC-36 Evo Pro' is set to push the boundaries of suspension performance even higher! Building on the proven Pace format, strength, reliability and race bred performance, the RC-36 is a no compromise design for riders who want the best.

■ Our unique hollow-section Monobox crown, heat-treated chromo* steel stanchions, double carbon fibre bridges and slider tubes give the RC-36 its hallmark quality and stiffness, holding you on track race after race, season upon season. And with its Greaseport™ system, virtually service free damper and springs you spend more time on the trail and less time in the workshop.

■ Every single part of the 90mm travel Pro-Class has been upgraded for '98 with a new high durability alloy Open Chamber damper, featuring increased capacity and separate high-speed compression and rebound damping and the ultimate in spring technology, a progressive stack of three custom Eibach springs providing the ultimate in smooth track control.



■ Precision set-up provided by external high-speed compression and rebound adjustment dial.

■ Triple spring stack system – push and sensitive action coupled to high impact control.

■ Other standard features include 70/90mm travel adjustment, low friction ceramic titanium nitride coated stanchions, weatherproof low friction seals and bearings plus aluminium steerer and stainless steel hardware!

Magazine testers have said:

'A new standard for 1998- *mbr* rating 5 out of 5!'

'Precious metal and carbon fibre fork that blows your mind with its superb quality'.

BIKE magazine- Germany, Group Test Winner.

■ 20mm pull through fork end option for hard-core and dual-stalom use.



97
PRODUCT
PACE
NATIONAL CHAMPION

specification

Weight	3lb (1365 grams)
Material	Slider assembly: Carbon Fibre. Monobox crown: 6084-T6 Aluminium. Damper: 6084-T6 Aluminium. Stanchion Tubes: Steel Custom Heat Treated Columbus
Fork length	455mm
Options	Disc brake mounts, Super rigid 20mm pull through spindle fork end, choice of aftermarket spring rates

RC-36 EVO MXCD™

racing fork

■ Our MXCD model is the workhorse of our range: high strength, high quality and total reliability. However unlike many forks, that doesn't mean compromised design, materials and performance. Designed for heavy duty use in all conditions the RC-36 EVO MXCD delivers all the quality, performance and refinement you need and represents great value for money. And its 70mm travel can be upgraded to a genuine 90mm for hard-core trail hacking too!

To quote **MBUK** magazine...

"The best all-round suspension fork currently available".

■ Sharing many of the features from our award winning Pro-Class model the MXCD's new spring and Open Chamber damper system lets your machine glide over the trail, keeping you fresh and in-control for the next challenge.

External adjustment for both high-speed compression and rebound damping allows you to quickly dial in your suspension needs so that sensitivity, progression and high bottom-out resistance are all quickly tuned in.

■ Other standard features include custom heat-treated lightweight steel steerer, aircraft grade alloy double bridges for super stiffness, and low friction service-free Microcrack™ plated stanchions.

90mm TRAVEL KIT

Increase the stroke and crank up the speed.

Simply add our spring-kit for 9cms of smooth travel.



specification

Weight 3lb 4oz (1475 grams)
Material Slider: Carbon Fibre. Monobox crown & double bridges: 6084-T6 Aluminium. Damper: 6084-T6 Aluminium. 28.6mm Stanchion Tubes: Steel Custom Heat Treated Columbus

Fork length 435mm

Options 90mm Travel Kit, Disc brake mounts, Super rigid 20mm pull through spindle fork end. Choice of aftermarket spring rates



RC-37 MX™ & MX Pro-Class™

double-crown fork

■ For short-course downhill racing or just plain having fun our new 120mm travel Dualsport RC-37 provides all the control you'll ever need. Both the MX and MX Pro versions carry many of the technically advanced features from both the RC36 EVO and RC150 range, which gives our new double-crown fork the highest function and low-weight values ever. And in a market crowded with cheap mass produced 'clones' the RC-37 is the first high specification, quality engineered fork in its class.

■ Two beautiful CNC machined crowns, milled and pocketed from billet, rigidly clamp onto an industry first- lightweight, butted, heat-treated carbon-steel stanchions, further stiffened with 31mm collars. A compact carbon fibre slider assembly, lifted from our radical RC150 Monster fork complete the hottest set of legs in the industry!

■ Other standard features include 100/120mm travel (MX has 100mm as standard, MX Pro™ 120mm) optional 20mm pull-through spindle fork ends and disc-brake mounts, Greaseport™ lubrication and additionally on the lightweight Pro-Class model (not shown), carbon-fibre bridge, ceramic coated Titanium Nitride stanchions, lightweight aluminium steerer and stainless steel hardware.

specification

Weight 3lb 15oz (1785 grams) MX Pro. 4lb 2oz (1870 grams) MX
Material Sliders (and bridge on MX Pro): Carbon Fibre. Crowns (and bridge on MX): 6084-T6 Aluminium. Damper: 6084-T6 Aluminium. 28.6mm Butted steel stanchion tubes: Steel Custom Heat Treated Columbus.

Fork length 478mm MX Pro. 458mm MX (axle to crown race seat)

Options 120mm Travel Kit MX, Disc brake mounts, Super rigid 20mm pull through spindle fork end

Note: Maximum combined headtube and headset dimension – 155mm.



RC-45™-45 ahead stem



■ Carved from solid bar the seamless RC-45 Stem is as strong as it is elegant. Without joints, weld-on clamps or bolts tagged onto its design, the RC-45's one-piece construction smoothly and securely clamps onto the forks' steerer and handlebars forming one of the most rigid and secure stems available. And at a premium weight – 150grams.

■ An internal titanium wedge exerts a vice like grip onto the steerer and leaves smooth and clean lines- saving those bloodied knees. And at the opposite end a wide handlebar clamp efficiently supports the bar and ensure-s flex-free steering control.

specification

Length	120mm or 135mm	Rise	90° to steerer	Weight	150 grams
Material	6084-T6 Aluminium. Wedge: Titanium				
Colours	Natural aluminium or Pro-Class grey				

RC50 Carbon-X.

■ The ultimate in steering control. You won't believe the way the tracking and steering of your bike is improved when our 20mm spindled Carbon-X hub is locked on! Used in conjunction with our pull-through spindle fork end option this high performance combination provides the closest you can get to direct steering response.



■ All the Pace 'system' features are there- large diameter carbon-kevlar body supporting massively strong cnc machined flanges and the highest quality service free bearings, plus of course our super rigid 20mm hollow axle!



RC-50™-50 hubs

RC-50XC

■ The compact design of the XC model hub belies its true character, because with its cylindrical carbon-kevlar body, bonded to CNC machined flanges, and aircraft grade aluminium spindle which we spec' with the highest quality cassette bearings, you have a heavy duty hub without heavy duty weight penalties.

■ Serrated dropout grippers also provide additional security and mount onto housings which isolate and weatherproof the bearings. Highly recommended as the ultimate lightweight racing hub to complement our carbon fibre RC-36 fork.



Get a grip

Ovoid spindle won't twist or flex in the fork dropout.



RC-50MT-Lock

■ If you need a retro-fit solution to your suspension fork flex, or simply want the ultimate front-end package when clamped into your RC-36 dropouts, simply spec' the unique and original MT-Lock.

■ Many years hub R&D and a fresh look at first principle fork-hub dynamics helped our engineers create the MT-Lock hub. Its primary feature is the unique ovoid spindle which has a mechanical locking action as its flat sides mate into the dropout slot. No twist, no flex, just rock solid support and a transformation in the way your machine steers. But it doesn't stop there – a super-stiff 39mm carbon-kevlar body supports large diameter flanges and stainless grippers (Titanium Nitride coated on Pro-Class model) mount onto housings to weatherproof the oversized cassette bearings.

specification

	XC	MT-LOCK	CARBON-X
Weight	4.5oz (125 grams)	6oz (175grams)	7.5oz (225grams)
Material	Carbon-Kevlar cylindrical body. Stainless steel grippers (Titanium Nitride coated on Pro'), 6084-T6 flanges and spindles.		
Colour	Natural aluminium or Pro-Class grey.		

RC-30™-30

monobox fixed blade
racing fork

Steering precision, high strength and quality allied to a proven competition pedigree characterise our lightweight RC-30 Monobox racing fork. If your preference is a non-suspension rig the RC-30 provides a unique alternative to the standard unicrown fork.



The RC-30's direct feel, immediate steering response and uncluttered design has won the confidence of many hardcore racers, including the UK's National Cross-Country Champion Nick Craig. And because we use only the very best materials in a bonded clamp-together design you are assured of long-lasting high-strength performance.



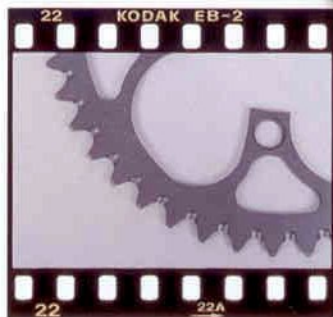
specification

Weight	11lb 14oz (890grams)
Length	390mm
Material	Crown and dropouts: 6084-T6 aluminium. Blades: Satin Plated 4130 Chromo. Steerer: 2014-T6 aluminium



RC-20™-20

chainrings



One of the most practical performance upgrades for your machine. Spec'd with lightweight 7075 Grade 1 Armour Aluminium Plate heat-treated to T6 condition, RC-20 chainrings have an extended service life and durability. With incredible resistance to wear, cracking, bending or chipping our rings are CNC machined for the highest standards of concentricity and trueness so your chain can smoothly keep on driving, for longer.

Additionally we machine our own unique Extruder Groove™ into the tooth bed, which helps transport mud and water away, further increasing chainring life and promoting smooth shifts in the poorest of conditions.



specification

Sizes	Compact- Inner 22. Middle- 32. Outer, 42, 44. Standard- Wide range. Call for details
Material	7075-T6 Grade 1 Armour Plate
Finish	Anodised Pro-Class Grey

RC-250T™ 250T

trials chassis



■ Trials riding is developing as one of the most exciting and skillful mountain bike sports of recent years, and what better way to spend your weekend than riding across or over whatever type of terrain mother nature or the section designer throws in your way!

■ The RC250-T is a Pro' level trials machine developed on the World Trials Championship circuit by the UK Trails Champion Chris Akrigg, and those who have seen this awesome team in action will be spellbound by an unforgettable display of skill and control.

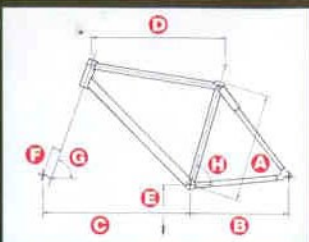
■ With trials specific geometry the 250T will grip and track across the slickest surface, and with its super-tough Load Dedicated 7000 Series tubeset will keep on taking the punishment event after event. With increased bb height, short rear stays and reinforced oversized headtube the 250T is equally at home styling over a boulder field as it is launching off a 3-metre wall. And due to its compact and stiff construction allows precise control and pin-point ride accuracy.

■ Standard features include disc-brake mounts, replaceable dropouts, externally butted mainframe, wide tyre clearance and reinforcing headtube gussets.



A	320	B	400	C	635	D	565
E	330	F	38	G	74"	H	76.5"

(Dimensions in mm)



specification

Weight	1.70Kg (3lb 10oz)
Material	Custom Pace Tubeset, 'Load-Dedicted' 7000 Series aluminium, Externally double-butted mainframe
Colour	Polished aluminium, clear anodised

Note: trials specific design, one size only.

Accessories

■ All Pace forks feature our unique Greaseport™ system, providing quick and easy internal fork lubrication, maintaining the forks super-slick action.



■ Pace RC-7 ProGel Grease is a specialist high performance suspension lubricant, not to be confused with a standard off the shelf multi-purpose grease. Its fully synthetic formulation dramatically reduces fork stiction and is suitable for prolonged competition and heavy-duty use. ProGel's 'Multi-Condition' design performs across a wide temperature range, maintaining its correct viscosity in the depths of winter or in summer desert heat.



■ Our RC-7S Grease Gun makes fork maintenance quick and easy without fork disassembly. The handy sized gun has a good capacity and high pump pressure, with narrow conical nozzle for quick and easy location into the forks grease port. With a couple of strokes of the gun your fork's lubed and ready for the next ride!

Fly the flag!

■ Tough and light-weight banners for trackside and in-store promotion.

■ Show people you have taste and logo up your car, bike, snow-board or fridge. Available in a wide range of designs and colours.



■ Protect your frame finish against that nasty cable rash! These heavy duty carbon-'look' vinyl patches are super-tough and stick like a very sticky thing.

Downhill Shirt

Heavy duty/highly breathable Airtex fabric.

Full cut to fit over body armour. Long tail and sleeves. Fully embroidered graphics.

Colour range: True Blue, Slash Red.

Sizes: M L xL

**Short-sleeved shirt**

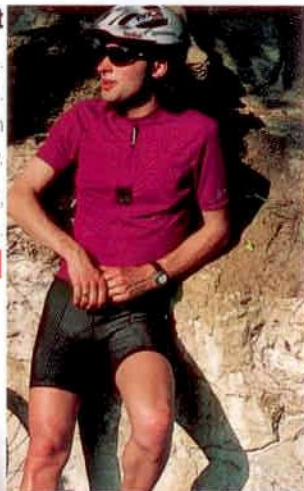
Classic fit. Highly breathable fieldsensor fabric.

Shirt features longer zip for temperature control.

Triple back pockets, including one which is waterproof and zipped for security.

Colour range: True Blue, Slash Red, Hello Yellow, Deep Purple and Khaki.

Sizes: S M L xL



Team Race Shirt available in full Team colours and logos. Short-sleeved and long-sleeved. Triple back pockets. Competition fit.

Sizes: S M L xL

**Summer Coolmax Tights**

6 panel construction cut higher at the back. Elasticated waist gripper and lightweight ankle grippers.

Waterproof inner pocket. Coolmax fabric. Black.

Sizes: S M L xL

**Shorts**

8 panel classic black fieldsensor. Competition fit. Highly breathable and quick drying. High quality leg grippers. Antibacterial Coolmax pad. Black.

Sizes: S M L xL





Long Sleeved Shirt

Highly breathable fieldsensor fabric. High neck. Triple back pockets including one which is waterproof and zipped for added security. Competition fit.

Colour range: True Blue, Slash Red, Hello Yellow, Deep Purple and Khaki.

Sizes: S M L XL



Fieldsensor Base Layer

For men or women. Brushed high performance mesh. Contoured for non-restrictive layering.

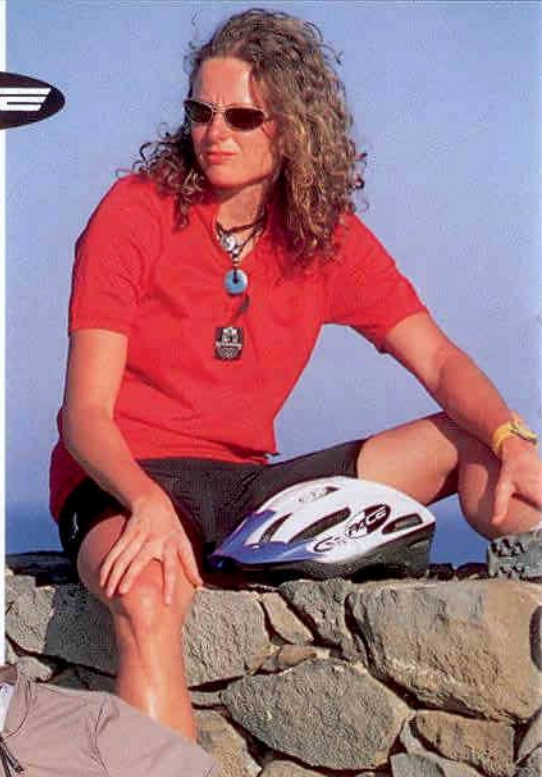
Sizes: S M L XL



Winter Tights

Thermal Interface breathable fabric, featuring double-knee panel for extra warmth, 6 panel construction. Elasticated waist and ankle grippers. Waterproof inner pocket. Black.

Sizes: S M L XL



Short-Sleeved Top

Contoured women-specific fit in fieldsensor fabric. Relaxed waist and subtle styling. Triple pockets including one which is waterproof and security zipped.

Colours: Deep Purple, Hello Yellow, Khaki, True Blue and Bright Red.

Sizes: **S** **M** **L** **XL**



Summer Tights

Coolmax fabric. 6-panel construction. Female-specific fit. Drawstring-adjustable waist. Lightweight ankle grippers. Waterproof inner pocket. Black.

Sizes: **S** **M** **L** **XL**



Shorts

8-panel for contoured fit in quick-drying fieldsensor fabric. Coolmax antibacterial pad. Lightweight grippers. Great fit and subtle styling. Black.

Sizes: **S** **M** **L** **XL**

WOMENS RACEWARE

OUTER LAYERS

Long-Sleeved Top

Suitable for cooler weather. Fieldsensor fabric. High-necked with relaxed fit and triple pocket system.

Colours: Deep Purple, Hello Yellow, Khaki, True Blue and Bright Red.

Sizes: S M L XL



Sleeveless Fleece

Warm and breathable. Features adjustable drawcord, 2 pockets and full embroidered Pace Racing on back. Looks great with long-sleeved top or over casual T-shirts. Black.

Sizes: S M L XL

Winter Tights

Interface breathable fabric. Double knee panel for extra warmth. 6-panel female cut. Drawstring adjustable waist, ankle grippers and waterproof inner pocket. Black.

Sizes: S M L XL





Training Fleece

Active high performance and breathable training fleece. Deep zip. 2 pockets. High collar and dropped back with adjustable drawcord.

Colours: True Blue, Slash Red and Deep Violet.

Sizes: **S M L XL**



Team fleece features large embroidered Pace Racing logos across back and down each sleeve. Available in Slash Red only.



Training Shell

Compact and lightweight shell jacket in high-tech microfibre fabric. Full zip. Fleece inner collar. Jacket folds into rear pocket with carrying belt. Breathable, wind resistant and showerproof. Interacts well with training fleece.

Colours: True Blue, Slash Red, Hello Yellow and Deep Violet.

Sizes: **S M L XL**



Team shell has all the performance of the training shell but also features large embroidered Pace Racing logos across back and down each sleeve. Available in Slash Red only.



OUTER LAYERS

Winteractive Jacket

Multi-function high performance cycling jacket. For full-on weather protection. Waterproof, windproof and breathable. Microfibre outer with unique laminated soft lining. Full length zippered side vents for superb ventilation and temperature control. Fleece lined collar, 2 front pockets and large back pocket.

Colours: Khaki, Slash Red, True Blue and Purple.

Sizes: S M L XL



LEISURE & CLUBWARE

Performance Baggy Shorts

High performance Microfibre-Tactel shorts. Lightly padded mesh liner and adjustable drawstring. Contrast colour inside pockets.

Colours: Black/Khaki or Khaki/Black



T Shirts

Classic crew neck short-sleeved T-shirt. 100% cotton. Embroidered logo on front and woven badge on sleeve.

Colours: Blue Spruce, Sand, Camel and Safari Green.

Sizes: M L XL





Casual Baggy Shorts

Jean style corduroy baggy shorts. Front and rear pockets. Leather and woven logo detail.

Colours: Black or Khaki.

Sizes: **S** **M** **L** **xL**



V-Neck Ts

Slim fit V-neck T-shirt with embroidered logo. 100% cotton.

Colour: Classic Black or White.

Sizes: **M** **L** **xL**



Long-Sleeved Ts

Long sleeved crew neck T-shirt with printed logo front and back. Heavyweight 100% cotton.

Colours: Ink Blue or Stone.

Sizes: **M** **L** **xL**



Sweatshirt

Textured pique-finish sweatshirt with small embroidered logo and badge detail on hem. 100% cotton.

Colours: Aqua, Spruce and Chilli.

Sizes: **M** **L** **xL**



Heavyweight Sweatshirt

Chunky 100% cotton sweatshirt. Large embroidered Oval/Professional Sports Systems logo.

Colours: Buff, Denim and Charcoal.

Sizes: **M** **L** **xL**



The Mammoth

'Woolly' textured fleece pullover with fitted cuffs and front zip. Front pocket. 100% polyester.

Colour: Carbon.

Sizes: **M L XL**



Cowl Fleece

Full-cut cowl neck casual fleece. Leather badge front and back. 100% polyester.

Colour: Pebble.

Sizes: **M L XL**



Canvas Jacket

Lightweight unlined summer jacket. Twin front hand pockets. Leather badge detail. 100% cotton.

Colour: Stone.

Sizes: **M L XL**



Moleskin Jacket

Casual style street jacket. Padded silver lining. Twin front hand pockets. Woven badge detail on front pocket and cuff.

Colour: Midnight Blue.

Sizes: **M L XL**



Baseball Caps

Embroidered logo. Curved brim. Adjustable (one size fits all). Available in a range of colours and fabrics, including Team Issue.



Wallet

For your money. Heavy duty black canvas wallet. Reinforced braided edges. Multitude of pockets and closures, some zipped. Embroidered logos in a range of colours.



Pace Watch

High quality performance wrist-watch. Water resistant to 3ATM. Luminous sweep hands. Date. Stainless steel case. Carbon effect face. Leather strap with embossed Pace logo.

Ski Hat

Bronx style woven ski hat. Embroidered logos. Range of colours. 100% polyester.



Pace Pins

Fly the flag! Black logo on chrome.



SIZING CHART

Men

Size	S	M	L	XL
Chest	36-38"	39-42"	43-45"	46-48"
Waist	28-30"	31-33"	34-36"	37-40"

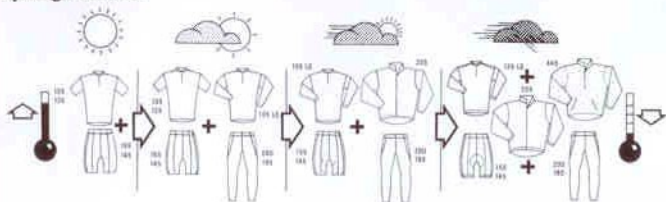
Women

Size	S	M	L	XL
	10	12	14	16
Chest	34"	36"	38"	40"
Waist	24"	26"	28"	30"
Hips	36"	38"	40"	42"

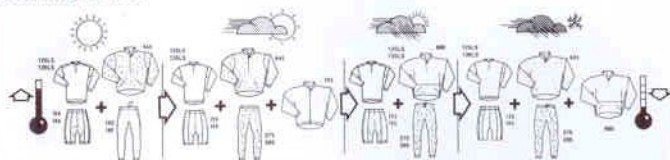
Note: All Raceware performance garments are close fit competition cut.

LAYERING SYSTEM

Spring/Summer



Autumn/Winter



Note: Conditions may dictate using our Base and Sleeveless garments as additional/replacement layers.



PACE STATUS 1 DEALERS 1997/98

A&M CYCLES, TAMWORTH	01827 54767	LEISURE LAKES, BREASTON	01332 872947
ALF JONES CYCLES, WREXHAM	01978 261580	M&P CYCLES, SWANSEA	01792 702555
ALPINE BIKES, ABERDEEN	01224 211455	MACLAINES, WOLVERHAMPTON	01902 311331
BEN HAYWARD CYCLES, CAMBRIDGE	01223 352294	MACLAINES, BASINGSTOKE	01902 311331
BIKE SCENE, GUISBOROUGH	01287 610735	MOUNTAIN HIGH, PANGBOURNE	0118 984 1851
BIKE TRAX, EPPING	01992 524441	MTS CYCLES/SPORT, DURHAM	0191 384 8174
BIKETREKS, AMBLESIDE	015394 31245	NEIL WALTON CYCLES, DIDSBURY	0161 446 2084
BIRLEY CYCLE CENTRE, SHEFFIELD	0114 264 8452	NORTHERN XPOSURE, LYTHAM ST ANNE S	01253 789737
BLOSSOMGATE CYCLES, RIPON	01765 606868	ON YOUR BIKE, LONDON	0171 378 6660
CORRIDORI, BANSTEAD	01737 373227	RED KITE CYCLES, SOLIHULL	0121 733 6072
CYCLE CARE, HIGH WYCOMBE	01494 447908	SANDY WALLACE, INVERKEITHING	01383 412915
CYCLE LOGIC, HELSTON	01326 561562	SIMPLY THE BIKE, TORQUAY	01803 200024
DAVE BATER CYCLES, BRISTOL	0117 956 6719	SINGLE TRACK BIKES, GLOUCESTER	01452 311771
FREETOWN, HULL	01482 589066	SHOKWAVE, NOTTINGHAM	0115 961 6191
JE JAMES, SHEFFIELD	0114 255 0557	STIF, LEEDS	0113 225 1111
JE JAMES, ROTHERHAM	01709 361919	SUNSET, CARDIFF	01222 371321
JE JAMES, CHESTERFIELD	01246 453453	SWINNERTONS, STOKE	01782 747782
JOHN ATKINS, LEAMINGTON SPA	01926 430211	TERRAIN SPORTS, CROSSHILLS	01535 632173
JULIE'S CYCLES, LEICESTER	0116 270 7936	THOMSONS CYCLES, GLASSGOW	0141 632 7441
LEISURE LAKES, PRESTON	01772 814990	WILDSIDE, TUNBRIDGE WELLS	01892 527069
LEISURE LAKES, BURY	0161 797 5625	XTREME MTB, POOLE	01202 741744
LEISURE LAKES, DAVENTRY	01327 310400	2XS, WEST WITTERING	01243 512552

WORLDWIDE AUTHORISED DISTRIBUTORS

Denmark	Biketojz	+45 8612 5931	Portugal	Ciclomotor	+351 1 4182332
France	Maitton	+331 6491 2828	Slovakia	Yarralire	+421 7 818547
Germany	Gekko	+49 621 438980	Sweden	Orange Scandinavia	+46 8 6611213
Netherlands	Peza Trading	+31 45 5719931	Switzerland	Velok	+41 1 9335540
Hungary	Yasec	+36 30 474585	USA	Pro Velo	+1 618 3932955
Italy	RaceWare	+39 19 680639			



e-mail
address

Info@pace-racing.co.uk

Pace Cycles Limited

Great Edstone, Kirkbymoorside, North Yorkshire. YO6 6PD. UK.
Telephone: 01751 432929. Fax: 01751 432691.

www.pace-racing.co.uk

Pace, Pace Racing and Raceware are registered Trade Marks of Pace Cycles Ltd.
In Italy, Raceware is a registered Mark of Raceware Competition Hardware.

PACE HARDWARE 1998 PRICE LIST

PRODUCT	CODE				RRP
Racing Frameset	RC-200-F7				895
Downhill Frame	RC-500				1495
Suspension Fork Downhill	RC-150				699
Suspension Fork	RC-36 EVO Pro				499
Suspension Fork	RC-36 EVO-Mixed				399
90mm travel kit 98MXCD	RCP-256				19.95
Susp'-Double Crown Fork	RC-37 MX Pro				599
Susp'-Double Crown Fork	RC-37 MX				499
Rigid Fork	RC-30 Monobox				175.55
Adheadset Stem	RC-45				79.95
Lightweight Hub	RC-50XC				64.95
Suspension Hub	Rc-50MTLOCK				74.95
Lightweight hub Pro-class	RC-50XC PRO				69.95
Suspension hub Pro-class	RC-50MT PRO				79.95
Chainrings	RC-20 (inner)				19.5
	Middle				24.55
	outer				31.95
	over 48t				36.55
Suspension grease gun	RCP-242				17.95
Suspension Grease Refill	RC-7S				7.25
6 Piece Carbon Patch Kit	RC-Carbon-5.				4.95

Pace Cycles Ltd
Great Edstone
Kirkbymoorside
Y06 6PD

Tel: 01751 432929 Fax:432691

PACE SOFTWARE 1998 PRICE LIST

PRODUCT	CODE	RRP
Short sleeved shirt-mens	RW-135	44.95
Long sleeved shirt-mens	RW-135LS	49.95
Shorts-men	RW-155	47.65
Summer Tights-men	RW-200	42.95
Mens Tight Winter	RW-265	59.95
Embroidered Downhill Top	RW-EDH	45.95
Performance Casual Shorts	RW-PS	39.95
Short sleeved shirt-womens	RW-125	44.95
Long sleeved shirt-womens	RW-135WLS	49.95
Shorts-women	RW-145	47.65
Summer Tights-Women	RW-190	42.95
Womens Tight Winter	RW-265W	59.95
Shell Jacket	RW-205	45.95
Sleeveless Fleece	RW-400	49.95
Fleece	RW-445	57.5
Winter Active Jacket	RW-660	159.95
Team Shell		59.95
Team Fleece	RW-205-T	69.95
Long Sleeved Team Top	RW-445-T	44.95
Short Sleeved Team Top	RW-TEAMTOPLS	39.95
Downhill Team Top	RW-TEAMTOP	59.95
Classic T-Shirt	RW-T	18.95
V-Neck T-Shirt	RW-V	19.95
Long Sleeved T-Shirt	RW-LST	22.95
Pique Sweatshirt	RW-PSWT	39.95
Stonewash Sweatshirt	RW-SWT	44.95
Mammoth Fleece	RW-F-B	69.95
Cowl Fleece	RW-F-P	74.95
Cord Casual Baggie Shorts	RW-CS	39.95
Moleskin Jacket	RW-MOLE	119
Pace Wallet	RW-WALLET	8.95
Pace Watch	RW-WATCH	59.95
Ski-Hat	RW-SKI-HAT	11.95
Team Baseball Cap	RW-TEAMHAT	14.95
Raceware Cap	RW-HAT	17.95