



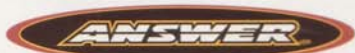
1996 MOUNTAINBIKE ACCESSORY CATALOG



POSI-LINK

ANTI-FLEX BONDED SYSTEM

The standard. We just raised it.



It's no secret that Answer and Bradbury combined their talents to develop the most celebrated suspension fork ever. And now, this distinguished team transcends their own top-ranking standards and ushers in a new era in suspension.

The next generation of Manitou forks represents the finest performance capabilities yet.

Answer's engineering staff, using advanced 3D engineering computers, developed the Posi-Link – an innovative design maximizing the stiffness of the arch while holding weight to a minimum.

Achieving these two seemingly divergent goals and creating an all new design optimized for strength and rigidity required the Answer/Manitou team to start with a clean slate. The elimination of inefficient fasteners was necessary, and a rugged, high-tech structure was pioneered.

Representing a radical departure from existing designs, the Posi-Link design features bold, new wrap-around shapes and aggressive coring out and cross bracing. This ultimate design achieves new, higher levels of stiffness not previously possible in traditional designs, and simultaneously allows for reduced weight.

The result...an unparalleled definition for performance excellence from Answer/Manitou.



Mach5's advanced design delivers unsurpassed torsional rigidity, providing pinpoint steering control.



- POSI-LINK'S BONDED MONOCOQUE STRUCTURE, CAD OPTIMIZED, SPREADS TORSIONAL LOADS THROUGHOUT THE ARCH. ELIMINATES FLEX WITHOUT EXCESS WEIGHT.
- EXCLUSIVE DEEP WRAP ARCH REDUCES INDEPENDENT LEG MOVEMENT WITHOUT REDUCING MUD CLEARANCE. CAD ANALYZED CROSS LINKED WEBS MAXIMIZE STIFFNESS, MINIMIZE WEIGHT.
- 360° BONDED CONSTRUCTION ALLOWS POSITIVE LEG ARCH ATTACHMENT AND ELIMINATES ANY POSSIBILITY OF LEG TO ARCH MOVEMENT.
- REDUCED STANCHION SEPARATION, REDUCES WEIGHT, INCREASES STIFFNESS WITHOUT DECREASING MUD CLEARANCE.



The evolution from M4 to advanced Posi-Link arch design, reduced weight and optimized stiffness

PATENT PENDING

Performance Excellence



Mach5 SX Cartridge Suspension Fork

Is it possible to maximize long-term performance, ride efficiency, and unparalleled durability in a lighter, stiffer frame?

We've got the answer...

The new Manitou Mach5 SX

"This is the stiffest long travel fork on the market."

-Mountain Bike Action

"Riders want designs that are on the cutting edge of performance. Answer has done that with the Manitou Mach5 SX. The top contender in the fork biz...a serious off-road weapon."

-Mountain Bike Action



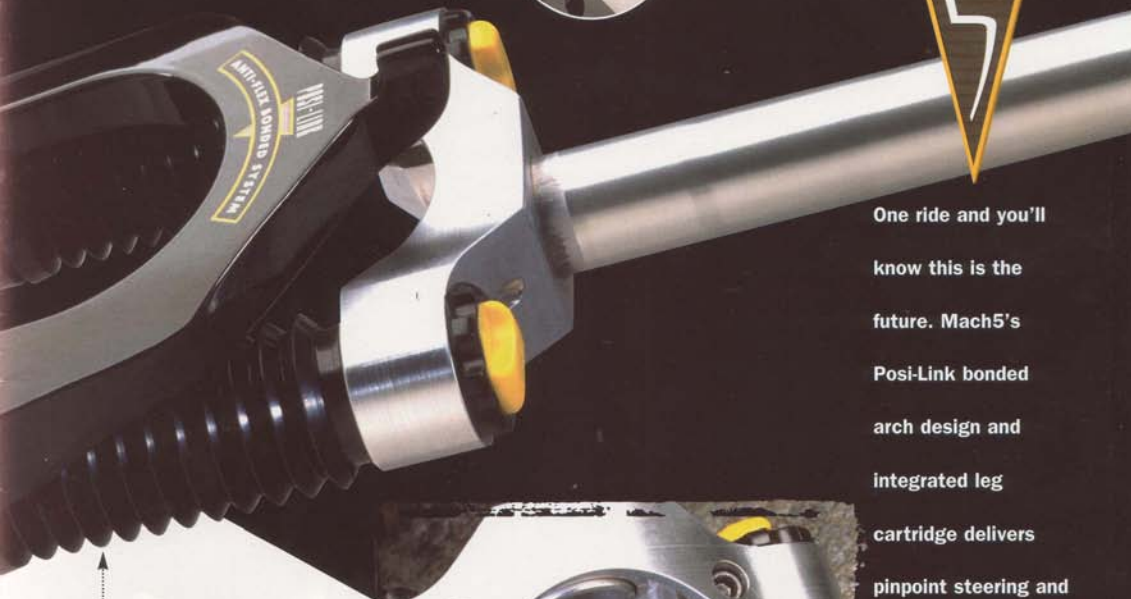
Cartridge is hand adjustable to 9 positions

Mountain bikers have continued to push for greater performance and stiffness, and that's what makes the Mach5 SX the answer — the ultimate choice for new levels of performance excellence. Designed with the innovative Posi-Link anti-flex bonded system, the Mach5 SX transcends other design limitations and raises suspension standards. The result...an absolutely uncompromising ride, improved performance, and durability serious riders demand.

Integrated inner leg cartridge with oversize damper improves heat dissipation, reduces fading and is completely rebuildable.



Light-touch, ergonomic and corrosion-proof external pre-load adjusters



One ride and you'll know this is the future. Mach5's Posi-Link bonded arch design and integrated leg cartridge delivers pinpoint steering and fade-free dampening.

MCU elastomer increases durability and big hit capability



Mach5's honeycomb pocketed magnesium arch sets the standard for stiffness in '96. Crown is forged and CNC'd from High Strength 2000 Series Alloy.

Mach5 SX features:

- Compression as well as rebound damping cartridge
- Increased oil volume reduces fading
- Travel increased to 63.5mm
- Weight of 3.1 lbs. (real weight not wishful target weight)
- Easton® Taperwall inner legs with Teflon coating
- Fork boots standard to prevent wear and improve long-term performance
- Permanent graphics to insure classic Manitou design quality
- Available with Easton alloy steerer in 1-1/4" and 1-1/8" threadless

MACH5 SX:	
85-6430	1 X 5-1/2
85-6431	1 X 6-1/2
85-6432	1 X 7-1/2
85-6433	1 X 8-1/2
85-6435	1" THREADLESS 4130
85-6440	1-1/8" X 5-1/2
85-6441	1-1/8" X 6-1/2
85-6442	1-1/8" X 7-1/2
85-6443	1-1/8" X 8-1/2
85-6445	1-1/8" THREADLESS 4130
85-6446	1-1/8" THREADLESS ALLOY
85-6450	1-1/4" X 5-1/2
85-6451	1-1/4" X 6-1/2
85-6452	1-1/4" X 7-1/2
85-6453	1-1/4" X 8-1/2
85-6455	1-1/4" THREADLESS 4130
85-6456	1-1/4" THREADLESS ALLOY
85-6458	LEG ASSEMBLY, NO CABLE HANGER

FORK SPARE PARTS:	
85-3590	SOFT RIDE KIT, 96 SX & EPC
85-3591	STOCK RIDE KIT, 96 SX & EPC
85-3592	FIRM RIDE KIT, 96 SX & EPC



Dave Weins
Team DIAMONDBACK

ANSWER

Mach5 Comp XC

The highest performing fork in its class, the new Manitou Mach5 Comp XC leaves the pack behind. Weighing in at only 3.1 lbs. and dominating its competitor's value price point with 1996 features, the Comp XC features the new Posi-Link construction design system and 28mm alloy inner legs (not found on other models in the Comp XC price range). Packed full of design quality and value.



2-stage adjustable preload elastomer system improves spring rate and rebound control while enhancing big hit performance

Mach5 Comp XC features:

- Same Posi-Link structure as the SX
- Oversized 28mm hard anodized inner legs
- Bold, 3-color permanent graphics
- MCU elastomers provide temperature stability
- CNC'd alloy crown



*Posi-Link Bonded Arch
Design increases stiffness
and steering accuracy*

MACH5 CROWNSTEERER:

85-3560	1 X 5-1/2
85-3561	1 X 6-1/2
85-3562	1 X 7-1/2
85-3563	1 X 8-1/2
85-3564	1" THREADLESS 4130
85-3565	1-1/8 X 5-1/2
85-3570	1-1/8 X 6-1/2
85-3571	1-1/8 X 7-1/2
85-3572	1-1/8 X 8-1/2
85-3573	1-1/8X10.5
85-3574	1-1/8" THREADLESS 4130
85-3575	1-1/8" THREADLESS ALLOY
85-3576	1-1/8 X10.5
85-3580	1-1/4 X 5-1/2
85-3581	1-1/4 X 6-1/2
85-3582	1-1/4 X 7-1/2
85-3583	1-1/4 X 8-1/2
85-3584	1-1/4X10.5
85-3585	1-1/4" THREADLESS 4130
85-3586	1-1/4" THREADLESS ALLOY

MACH5 COMP XC:

85-7200	1 X 5-1/2
85-7201	1 X 6-1/2
85-7202	1 X 7-1/2
85-7203	1 X 8-1/2
85-7205	1" THREADLESS 4130
85-7210	1-1/8 X 5-1/2
85-7211	1-1/8 X 6-1/2
85-7212	1-1/8 X 7-1/2
85-7213	1-1/8 X 8-1/2
85-7215	1-1/8" THREADLESS 4130
85-7220	1-1/4 X 5-1/2
85-7221	1-1/4 X 6-1/2
85-7222	1-1/4 X 7-1/2
85-7223	1-1/4 X 8-1/2
85-7225	1-1/4" THREADLESS 4130

Mach5 Pro XC

Designed for high performance in a lower price point, the Mach5 Pro XC features a 3-stage progressive MCU system for improved spring rate performance, rebound control and bottom-out protection.

6" MCU elastomers with connecting sleeves
(patented design) and hand adjustable preload.



New Post-Link design reduces flex and increases strength

Mach5 Pro XC features:

- MCU elastomer compound
- Real weight of 3.1 lbs, lighter than others in its price range
- 2.25" Travel, with only 16.625" ride height
- 28mm Easton® taperwall inner legs, not found on other forks at this price point
- Boots factory installed to reduce wear
- Simple preload adjuster, E-clip style with no tools necessary
- CNC'd alloy crown
- Bold, 3-color permanent graphics

MACH5 PRO XC:

85-6030	1 X 5-1/2
85-6931	1 X 6-1/2
85-6932	1 X 7-1/2
85-6933	1 X 8-1/2
85-6935	1" THREADLESS 4130
85-6940	1-1/8 X 5-1/2
85-6941	1-1/8 X 6-1/2
85-6942	1-1/8 X 7-1/2
85-6943	1-1/8 X 8-1/2
85-6945	1-1/8" THREADLESS 4130
85-6950	1-1/4 X 5-1/2
85-6951	1-1/4 X 6-1/2
85-6952	1-1/4 X 7-1/2
85-6953	1-1/4 X 8-1/2
85-6955	1-1/4" THREADLESS 4130

FORK SPARE PARTS:

85-3593	SOFT RIDE KIT: 96 PRO
85-3594	STOCK RIDE KIT: 96 PRO
85-3595	FIRM RIDE KIT: 96 PRO
85-3596	SOFT RIDE KIT: 96 COMP
85-3597	STOCK RIDE KIT: 96 COMP
85-3598	FIRM RIDE KIT: 96 COMP
85-3609	96 FORK BOOT KIT BLACK
85-3605	96 FORK BOOT KIT YELLOW
85-3606	96 FORK BOOT KIT CLEAR
85-3607	96 FORK BOOT KIT RED
85-3608	96 FORK BOOT KIT BLUE



Susan DeMattei
Team DIAMONDBACK



PATENT PENDING

Manitou EFC Suspension Fork

- Ultra-stiff MMC arch
- Integrated inner leg cartridge with oversize damper improves heat dissipation, reduces fading and is completely rebuildable
- Independently adjustable indexed preload and 9-position adjustable fluid dampening control
- 17" ride height with 3" travel

Manitou EFCDH Suspension Fork

- Double wide drop-outs for unparalleled clamping area & stiffness
- Oversize 13.1mm axle and pinch clamping bolts on drop-out eliminates the flex seen in all other designs
- Custom Manitou front suspension hub with 84mm spoke flange spacing is included with this uncompromised performance package
- This version of the EFC is available only in one option, without crown/steerer. Fork must be built up by purchasing the proper crown/steerer option

EFC FORK (WAS DH):
 85-6150 EFC LEG ASSEMBLY
 85-6161 EFC-DH LEG ASSEMBLY

SLT CROWN/STEERER:
 FITS EFC, M1-M4:
 85-3440 1 X 5-1/2
 85-3441 1 X 6-1/2
 85-3442 1 X 7-1/2
 85-3443 1 X 8 1/2
 85-3444 1" THREADLESS 4130
 85-3445 1-1/8 X 5-1/2
 85-3450 1-1/8 X 6-1/2
 85-3451 1-1/8 X 7-1/2
 85-3452 1-1/8 X 8 1/2
 85-3453 1-1/8X10.5
 85-3454 1-1/8" THREADLESS 4130
 85-3455 1-1/8" THREADLESS ALLOY
 85-3456 1-1/8 X10.5
 85-3460 1-1/4 X 5-1/2
 85-3461 1-1/4 X 6-1/2
 85-3462 1-1/4 X 7-1/2
 85-3463 1-1/4 X 8 1/2
 85-3464 1-1/4X10.5
 85-3465 1-1/4" THREADLESS 4130
 85-3466 1-1/4" THREADLESS ALLOY

◀ *Doug Bradbury designed the EFCDH fork with wide drop-outs and downhill hub combination for unmatched stability and control of the front end.*



D H F O R K •



Jake Watson

Team DIAMONDBACK

Photo: Gary Harrison - Mountain Bike



"They accelerate quickly and can be trusted to handle any situation.....Would we rate these as a top cross-country racing tire? You bet."


- Mountain Bike Action

Manitou Fang Tire

Our top-rated cross-country racing tire:

- 26" x 2.1" black side wall
- Kevlar bead, weighing only 610 grams
- Premium nylon casing, 180 TPI
- Actual casing width 1.8"
- Directional tire for optimized traction and breaking performance

MANITOU FANG TIRE:
77-0500 MANITOU FANG 26 X 2.1 TIRE



"They carve like ice skates in soft dirt."

- Mountain Bike Action

April 1995

F A N G T I R E



Manitou FS

Our one-piece optimized swingarm pivot location is moved forward and raised to minimize rider-induced pogo-ing.



FS FRAMESET:
 70-1116 MANITOU FS96 FRAME SET 16"
 70-1117 MANITOU FS96 FRAME SET 17"
 70-1118 MANITOU FS96 FRAME SET 18"
 70-1119 MANITOU FS96 FRAME SET 19"
 70-1120 MANITOU FS96 FRAME SET 20"

DH FRAMESET:
 70-1015 MANITOU DH96 FRAME SET 16"
 70-1017 MANITOU DH96 FRAME SET 17"
 70-1018 MANITOU DH96 FRAME SET 18"
 70-1019 MANITOU DH96 FRAME SET 19"
 70-1020 MANITOU DH96 FRAME SET 20"

Mountain Bike Action declares the 1996 Manitou Singleshock "the favorite...a great woods bike, in cross-country or downhill... Answer's Singleshock is the clear winner."

Manitou DH

The '96 DH frame set knows no boundaries in quality, durability, design, and performance. True to its tradition and distinguished by unprecedented precision engineering, the '96 DH offers the most unrelenting downhill ride. The Manitou DH features the Manitou EFCDH fork, 3" of travel and the latest in damping technology with adjustable rebound and compression cartridge. The ultra-stiff MMC brake arch and 7" MCU elastomer stacks, oversize dropout, hub and axle combine for unparalleled rigidity.



FS MANITOU
 FRAME SET PACKAGE INCLUDES:
 THE MANITOU FS FRAME,
 MANITOU MACH5 SX SUSPENSION
 FORK WITH ALLOY THREADLESS
 STEER TUBE, MANITOU
 MONOSHOCK REAR SUSPENSION,
 AND SEATPOST COLLAR, BRAZE-ON
 STYLE DERAILLEUR CLAMP



Manitou FS Features:

This year, we proudly introduce the '96 Manitou FS—an all new masterpiece design featuring the new Manitou monoshock and triangulated seatstay for increased rear end rigidity and tracking, the Manitou Mach5 SX cross country fork – the latest in dampening technology, and there's more. The new Post-Link bonded arch design with 1-1/4" threadless alloy steerer. The result: Unmatched performance and the ultimate ride over the most challenging terrain.



Tom Rogers
Team Manitou



Manitou monoshock with damping controlled MCU Elastomer and Hydraulic cartridge gives 4.0" of travel.



Tim Larkin
Team Manitou

New CNC machined rear crown improves the strength and rigidity of the seatstay connection to the seat tube. Includes a removable rear brake cable stop.



Manitou HT

Narrower with side and front windowed sections, our new H section is designed for lighter weight and increased stiffness.

Praised as "One of the ten best bikes of all time" by Mountain Bike Action, the '96 Manitou HT design engineers did the impossible. They improved it.

Manitou HT Comp

The same quality and craftsmanship as the Manitou HT, with a more price effective package excluding front suspension, seatpost, and front derailleur.

- Bolt-on rear cable stop
- Custom Easton® 7005 program tube set designed to Doug Bradbury's specs
- New color-coordinated graphics for 1996
- The Manitou HT Comp is finished with a durable high gloss, midnight black powder coat.



HT FRAMESET:
 70-1216 MANITOU HT'96 FRAME SET 16"
 70-1217 MANITOU HT'96 FRAME SET 17"
 70-1218 MANITOU HT'96 FRAME SET 18"
 70-1219 MANITOU HT'96 FRAME SET 19"
 70-1220 MANITOU HT'96 FRAME SET 20"

HT COMP FRAMESET:
 70-1316 MNTU COMP'96 FRAME SET 16"
 70-1317 MNTU COMP'96 FRAME SET 17"
 70-1318 MNTU COMP'96 FRAME SET 18"
 70-1319 MNTU COMP'96 FRAME SET 19"
 70-1320 MNTU COMP'96 FRAME SET 20"

HT MANITOU
 FRAME SET PACKAGE INCLUDES:
 THE MANITOU HT FRAME,
 MANITOU MACH5 SX
 SUSPENSION FORK WITH ALLOY
 THREADLESS STEER TUBE, AND
 SEATPOST COLLAR, BRAZE-ON
 STYLE DERAILLEUR CLAMP

Manitou HT Features:

The 1996 Manitou HT is a design masterpiece. Refined to make it stronger yet lighter, the HT comes equipped with the new Manitou Mach5 SX cross-country fork featuring the latest in dampening technology and patent pending Posi-Link bonded arch design. Its new geometry lowering BB25.4 mm improves single track and high-speed handling. The rear drop-outs have been updated to increase rigidity and strength. The result: The finest hard-tailed mountain bike frame set available.



Tom Rogers
Team Manitou



High polish and a spectacular clear anodized finish enhances our hand built, custom Easton® 7005 program aluminum.



Will Geoghan
Team Manitou



Our new CNC machined rear crown improves the strength and rigidity of the seatstay connection to the seat tube. A removable rear brake cable stop is included.

F R A M E S E T

MANITOU

Taperlite 2 Handlebar

Weighing only 195g, the Taperlite2 features a 23" handlebar with internally tapered walls for strength. Reflecting many of the attributes of the more expensive Hyperlite, the Taperlite 2 is a first-class value.

Jurgen Beneke
Team Barracuda



TAPERLITE

03-6209	BLACK 3"
03-6201	CLEAR 3"
03-6223	BLACK 5"
03-6221	CLEAR 5"

HYPERLITE

03-8005	NATURAL 3"
03-8004	BLACK 3"
03-8006	BLUE 3"
03-8103	NATURAL 5"
03-8104	BLACK 5"
03-8106	BLUE 5"

Alumilite DH Bar

Downhill riders aren't looking for lightweight flexy handlebars. They're demanding ultra-strong and stiff bars that deliver pinpoint steering accuracy. Our two new DH bars are designed with features specially requested and used by world-class DH riders.

- Captured 6061 aluminum bulged center section
- Heat treated with anodized finish
- Extra wide, 25" width for optimum leverage and control
- The world's strongest bar!



DH BARS:	
03-5040	ALUMILITE DH BAR STANDARD
03-5041	ALUMILITE DH BAR FLAT 11"
03-5042	ALUMILITE DH BAR SWEEP 6"

*DH bars are
made of high strength
7075, 718 X .160
ultra thick material,
for no-flex pinpoint
steering accuracy*

H A N D L

Hyperlite Handlebar

The lightest (148g), strongest full-size (23") aluminum handlebar. "If you want lightness but don't want to replace it every year, better go with the Answer Hyperlite," they advised, "the strength is far beyond the other bars tested."
- Mountain Bike Magazine

The walls of the Hyperlite decrease in size from thick near the critical stem area to thin out at the ends. This metal configuration, created by Easton® Aluminum, gives you unparalleled shock absorption and strength.

Hyper-Ti Handlebar

A new standard from Answer and Easton tested on the racetracks of America by top professional cross-country riders, the Hyper-Ti is constructed from the exclusive Easton Alpha Beta Ti-Met 15/3/3 Titanium (processed and taperwalled like aluminum).

- Easton cold formed taper drawn Titanium
- Made in the USA exclusively for Answer Products
- Two-year warranty against bending or breaking
- Full sized @ 580mm wide

DEASTON
TIMETAL® 15-3

3 105 g

ANSWER
HYPER-TI

HYPER-TI
03-0500 HYPER-TI 3"

Hyperlite's exclusive taperwall profile delivers unmatched fatigue strength.

The Hyper-Ti weighs only 105 grams and features the same superior fatigue life as Hyperlite and better vibration dampening.

DEASTON
TIMETAL® 15-3

3 105 g

E B A R S

Manitou Stem

- Designed by Doug Bradbury
- Internal pinch bolts for smooth finish

MANITOU STEM:

85-2400	1.125X120 10° RISE
85-2410	1.125X140 10° RISE
85-2420	1.250X120 10° RISE
85-2430	1.250X140 10° RISE



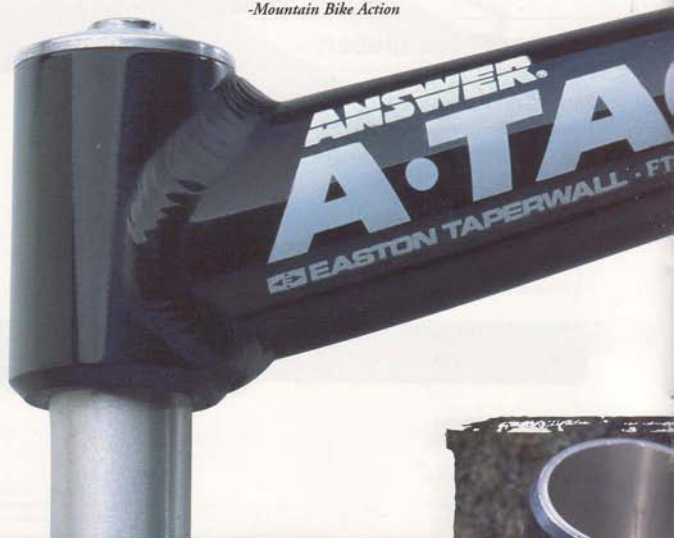
"The highest levels of torsional rigidity and shock absorption"

-Mountain Bike Action

Answer A-tac Stems

For years, Answer's A-tac stem has earned the distinction as the premier mountain bike stem, magazine rated #1 — racetrack proven. One look at the oversized Easton® construction, precision welds, Easton Taperwall aluminum and impeccable metal finishing, and you'll know why.

- New lengths and rises in A-head set style
- Warranted for two full years against bending or breaking. Made in U.S.A.



◀ The Manitou stem is precision CNC machined from solid aluminum billet utilizing crossbeam design for strength and torsional rigidity.



Dave Cullnian

Team DIAMONDBACK

Photo: Chris Hesterman/Action Sports Media



A-tac DH Stem

Now from the demanding DH courses around the world, Answer introduces new short-length stems designed to meet the rigorous standards of world-class downhill riders.

- CNC machined main tube for ultimate torsional flex control
- Polished and clear anodized 6061 Aluminum Alloy
- Stem body is heat treated to T-6 after welding
- Available in 1-1/8" and 1-1/4", 80mm and 110mm lengths, A-head style only
- Two-year warranty against the demands of any international racetrack

DH STEM:

85-2501	110 MM X 1.125 Ø RISE
85-2506	110 MM X 1.250 Ø RISE
85-2507	80 MM X 1.125 Ø RISE
85-2508	80 MM X 1.250 Ø RISE



A-TAC STEM:

85-2003	1" X 120MM NATURAL
85-2010	1" X 135MM BLACK
85-2013	1" X 155MM NATURAL
85-2023	1" X 150MM NATURAL
85-2103	1.125 X 120 NATURAL
85-2110	1.125 X 135MM BLACK
85-2113	1.125 X 135 NATURAL
85-2123	1.125 X 150 NATURAL
85-2103	1.250 X 120 NATURAL
85-2210	1.250 X 135MM BLACK
85-2213	1.250 X 135 NATURAL
85-2223	1.250 X 150 NATURAL

NO-RISE:

85-2300	1" X 135 NATURAL
85-2301	1" X 150 NATURAL
85-2302	1.125 X 135 NATURAL
85-2303	1.125 X 150 NATURAL
85-2304	1.250 X 135 NATURAL
85-2305	1.250 X 150 NATURAL

A-HEAD STEMS:

85-2368	1 X 115 NATURAL Ø RISE
85-2353	1X135 BLACK Ø RISE
85-2365	1 X 135 NATURAL 17 RISE
85-2340	1 X 135 NATURAL Ø RISE
85-2342	1 X 150 NATURAL Ø RISE
85-2309	1.125X135 NATURAL Ø RISE
85-2344	1.125X135 NATURAL Ø RISE
85-2357	1.125X135 BLACK Ø RISE
85-2366	1.125X135 NATURAL 17 RISE
85-2370	1.250X115 NATURAL Ø RISE
85-2346	1.125X150 NATURAL Ø RISE
85-2348	1.250X135 NATURAL Ø RISE
85-2361	1.250X135 BLACK Ø RISE
85-2367	1.250X135 NATURAL 17 RISE
85-2350	1.250X150 NATURAL Ø RISE



Andrew Shandro
Team Marin



Photo: Jeff Herring



▶ **Oversize Easton Taperwall 6061 T6 aluminum quill gives stem unmatched shock absorption and torsional rigidity.**

▶ **Four bolt bar clamp constructed of high strength aluminum alloy reduces flex.**



M

S

Answer Logo Grip

The Answer Logo Grip's eccentric design adds padding in the palm of your hand, while keeping the overall grip small. Kraton G. Thermoplastic—
Manufactured in the U.S.A.

LOGO GRIPS:

82-1010	RED
82-1011	BLACK
82-1012	BLUE
82-1013	PURPLE
82-1014	CLEAR



Dave Weins
Team DIAMONDBACK

Photo: John Chubb



Answer Gripshift Grips

For the most confident grip, Answer offers the Gripshift and Logo Grip combination set. Shock absorption comfort and a secure grip provides ease in shifting.



GRIPSHIFT GRIP SET:	
82-2000	GREY
82-2001	BLACK
82-2002	CLEAR
82-2003	BLUE

Answer's new
Gripshift Grips
include a set of
Answer Logo Grips



G R I P S B

Answer Aggressor Grip

Molded from Kraton-G Thermoplastic by Answer for its tactile, adhesive grip quality, the Aggressor Grip design features a mushroom/waffle combination offering shock absorption, comfort and a secure grip. Made in the U.S.A.

AGGRESSOR GRIPS:	
82-0000	BLACK
82-0903	BLUE
82-0004	PURPLE
82-0905	RED
82-0906	CLEAR

HYPERENDS:

HILL:	
83-5000	PURPLE
83-5001	NATURAL
83-5002	BLACK
83-5003	BLUE
XC:	
83-5010	PURPLE
83-5011	NATURAL
83-5012	BLACK
83-5013	BLUE
GUARDIAN:	
83-5020	PURPLE
83-5021	NATURAL
83-5022	BLACK
83-5023	BLUE
CLIMBER:	
83-5030	PURPLE
83-5031	NATURAL
83-5032	BLACK
83-5033	BLUE

Hyperends

For the best hand grip, greater comfort and less hand fatigue, our 1" diameter grip area Hyperends can't be beat. Available in two versions and four anodized colors.

The patented clamping system tightens against the outer wall of the bar for a secure mount without crimping.



A N S W E R E N D S

Rocker Seatpost

- Exclusive Rocker CNC machined head with two independent adjustments, independent fore-aft and tilt adjustments (Patent pending)
- Easton® EA-70 aluminum pillar, 350mm
- Weighs only 220 grams
- Brushed and clear anodized with permanent graphics
- Rocker seatpost comes in four popular sizes, 26.8mm, 27.0mm, 27.2mm, and 31.6mm



*Eric Carter
Team Barracuda*

Photo: Gianni Caruso



ROCKER POST:	
85-8600	26.8MM CLR
85-8601	27.0MM CLR
85-8602	27.2MM CLR
85-8603	31.6MM CLR



The light and sturdy new '96 Rocker seatpost features independent fore-aft and tilt adjustments.

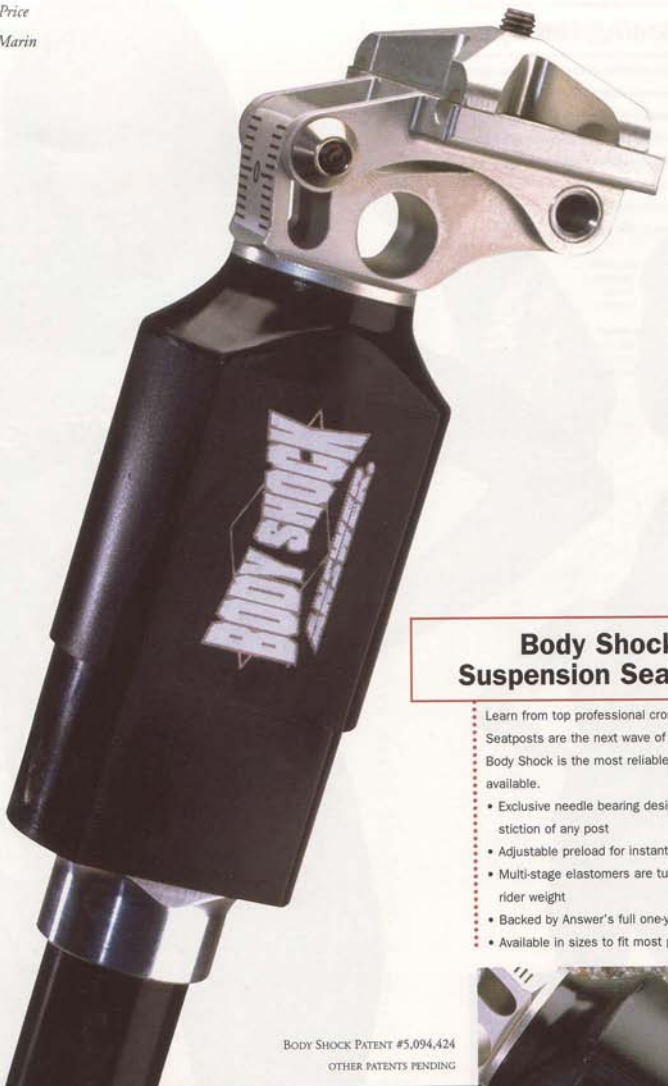


S E A T P



Daryl Price
Team Marin

Photo: Chris Hillerman, Mountain Bike



Body Shock Suspension Seatpost

Learn from top professional cross-country racers. Seatposts are the next wave of suspension. The Body Shock is the most reliable and smoothest available.

- Exclusive needle bearing design delivers lowest stiction of any post
- Adjustable preload for instant tuning
- Multi-stage elastomers are tunable for any rider weight
- Backed by Answer's full one-year warranty
- Available in sizes to fit most popular bikes

SUSPENSION SEATPOST:

85-8500	BODY SHOCK W/OUT SHIM
85-8516	SHIM 26.8
85-8517	SHIM 27.0
85-8518	SHIM 27.2
85-8519	SHIM 31.6
85-3556	ELASTOMER KIT
85-3557	SOFT ELASTOMER KIT
85-3558	HARD ELASTOMER KIT

BODY SHOCK PATENT #5,094,424
OTHER PATENTS PENDING

*Exclusive rocker head,
low stiction needle
bearing design combine
to make the ultimate
suspension seatpost.*



O S T S

Racing Jerseys

Answer and Manitou racing jerseys can be seen on cross-country and downhill courses around the world.

- Bold new '96 graphics, with full print sleeves, cuffs, collars and extra-long tail
- Cool and comfortable, breathable inks
- Saddle-cut shoulders for added comfort
- Made in the USA.

MANITOU LYCRA JERSEY:

77-0690	MEDIUM
77-0691	LARGE
77-0692	X-LARGE

ANSWER LYCRA JERSEY:

77-0610	MEDIUM
77-0611	LARGE
77-0612	X-LARGE

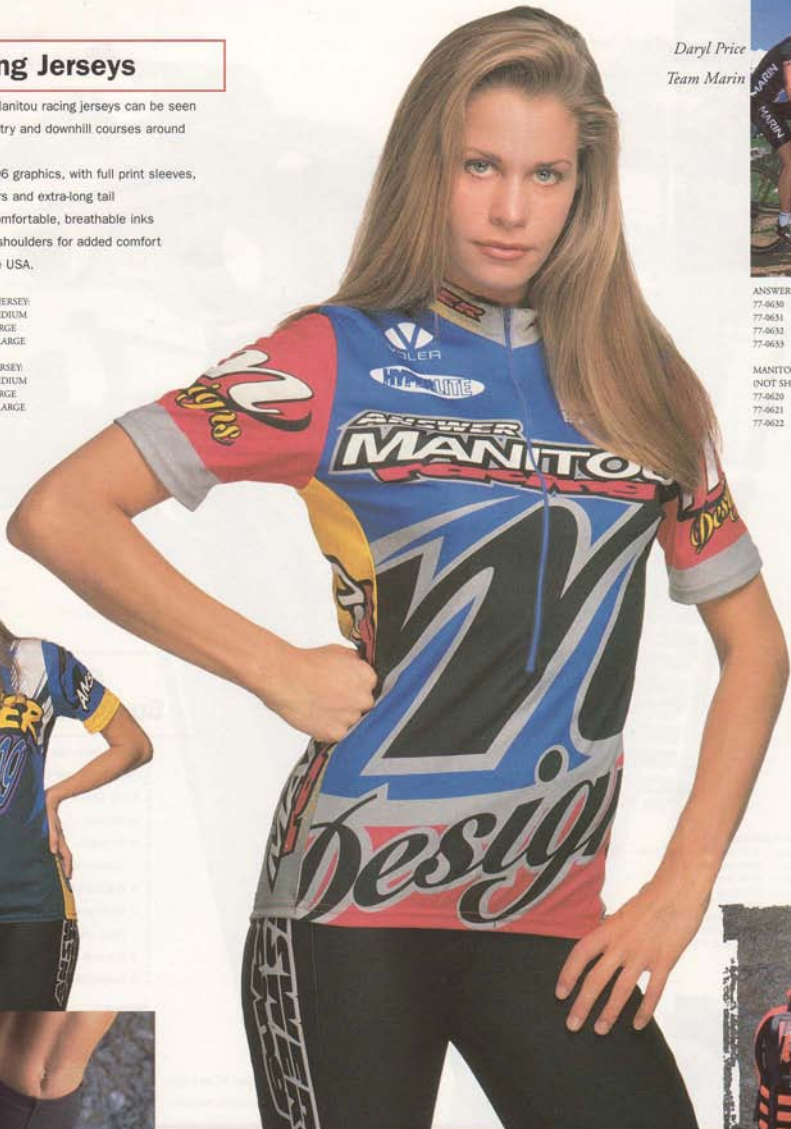
ANSWER SHORTS:

77-0630	SMALL
77-0631	MEDIUM
77-0632	LARGE
77-0633	X-LARGE

MANITOU WINDBREAKER:

(NOT SHOWN)	
77-0629	MEDIUM
77-0621	LARGE
77-0622	X-LARGE

Daryl Price
Team Marin



Answer shorts are made of durable 8 oz. lycra with a Bio-aire antibacterial pad for extra comfort and protection.



R A C I N G

Answer Racing Goggles

- Keep your eyes dirt free in the downhill with Answer's premium quality optic goggles.
- Manufactured in the U.S.A. by Scott
- Venturi-assisted frame venting system
- Built-in roost deflector



ANSWER CYCLING GOGGLES:

77-0100	BLUE
77-0101	WHITE
77-0102	VIOLET
77-0103	BLACK
77-0104	RED

REPLACEMENT LENS:

77-0020	GREY
77-0021	PEACH
77-0030	CLEAR



77-0150 MANITOU TEAM WATER BOTTLE

Downhill Gear

The **speed suit** is made for the aggressive new breed of downhill racers. Compact design gives full movement and complete coverage.

- Solid plastic design works to distribute impact loads
- Designed and used by many world-class downhill riders
- Compact design fits under jersey

The **knee guards** are designed for unobstructed movement and complete protection, including knees and shins.

- Form-fitting design allows unobstructed movement

Constructed from high-impact plastic to distribute impact loads

Stylus padded clairno palm with thumb protector and blister free palm pattern

Answer Racing Gloves

- Answer gloves are the undisputed leader. Designed for the full protection needs of mountain bikers.
- Answer gloves offer quality with a padded top for extra hand protection, mesh fingers which keep the hand cool, and flexibility, durability, and style.



STRATOS:

BERRY YOUTH:

77-7280	XCS
77-7281	XSM
77-7282	SM
77-7283	MD
77-7284	LG
77-7285	XL
77-7286	XXL
77-7290	XCS
77-7291	XS
77-7292	SM
77-7293	MD
77-7294	LG
77-7295	XL
77-7296	XXL

RED YOUTH:

77-7300	XCS
77-7301	XS
77-7302	SM
77-7303	MD
77-7304	LG
77-7305	XL
77-7306	XXL
77-7310	SM
77-7311	LG
77-7312	XL
77-7313	XXL

TEAL BLUE ADULT:

77-7295	SM
77-7296	MD
77-7297	LG
77-7298	XL
77-7299	XXL
77-7300	SM
77-7301	MD
77-7302	LG
77-7303	XL
77-7304	XXL

FORCE:

BERRY:

77-7250	XS
77-7251	SM
77-7252	MD
77-7253	LG
77-7254	XL
77-7255	XXL
77-7260	XL
77-7261	XXL

TEAL BLUE:

77-7256	XS
77-7257	SM
77-7258	MD
77-7259	LG
77-7260	XL
77-7261	XXL

GREEN/RED:

77-7262	XS
77-7263	SM
77-7264	MD
77-7265	LG
77-7266	XL
77-7267	XXL

BLACK:

77-7268	XS
77-7269	SM
77-7270	MD
77-7271	LG
77-7272	XL
77-7273	XXL

STYLUS:

BERRY ADULT:

77-7220	XS
77-7221	SM
77-7222	MD
77-7223	LG
77-7224	XL
77-7225	XXL
77-7230	XS
77-7231	SM
77-7232	MD
77-7233	LG
77-7234	XL
77-7235	XXL

TEAL BLUE ADULT:

77-7236	XS
77-7237	SM
77-7238	MD
77-7239	LG
77-7240	XL
77-7241	XXL

GREEN/RED ADULT:

77-7242	XS
77-7243	SM
77-7244	MD
77-7245	LG
77-7246	XL
77-7247	XXL

BLACK ADULT:

77-7248	XS
77-7249	SM
77-7250	MD
77-7251	LG
77-7252	XL
77-7253	XXL

ONE SPEED SUIT:
77-0100

SPEED SUIT, BLK/RED:
77-0101

KNEE GUARDS:
77-0102



Daryl Price
Team Marin



Photo: Bob Taylor

ACCELERATOR SHOE

77-1090	SIZE 36
77-1051	SIZE 37
77-1052	SIZE 37.5
77-1053	SIZE 38
77-1054	SIZE 38.5
77-1055	SIZE 39
77-1056	SIZE 39.5
77-1057	SIZE 40
77-1058	SIZE 40.5
77-1059	SIZE 41
77-1060	SIZE 41.5
77-1061	SIZE 42
77-1062	SIZE 42.5
77-1063	SIZE 43
77-1064	SIZE 43.5
77-1065	SIZE 44
77-1066	SIZE 44.5
77-1067	SIZE 45
77-1068	SIZE 45.5
77-1069	SIZE 46
77-1070	SIZE 47
77-1071	SIZE 48



Accelerator MTB Shoe

One of Mountain Bike Magazine's favorite off-road shoes, the new Accelerator racing shoe builds on the race-proven performance of the original with additional features and new colors and graphics – the ultimate in quality, dependability, style, and function.

- Extra stiff, tapered mid-sole, constructed from 3M fiber, reinforced injection molded nylon
- Tapered to be stiff in the heel and mid-section, but flexible in the toe for walking comfort
- SPD compatible
- Padded removable soft innersole, and replacements are available through Answer Products
- Easily replaceable straps keep Velcro fresh (Patent pending)
- Reflective rear patch
- Dynamic 6-color Answer graphics



Newly revised outsole with additional mud relief ports and new heel bumper for better wear and protection.



Chugger MTB Shoe

Designed for the performance minded recreational rider, the Accelerator II sport shoe is still built in the same experienced factory as the original Accelerator. Only the best hides, fabrics, and materials are used in the construction of the ACCII.

- Manufactured from the tough, breathable suede leather and no-stretch Cordura mesh
- Wrap-around, no-stretch nylon webbing heel strap supports heel counter area during hard riding and SPD release
- Features lace-up and multi-point Velcro outer flap, and keeps foot comfortable and secure
- Aggressive hi traction outersole for on/off trail, molded from long-wearing carbon rubber
- Unique midsole supports foot with optimum balance between all-out racing and casual shoe performance
- SPD compatible, internal heel plate included
- Removable padded innersole, reflective rear patch



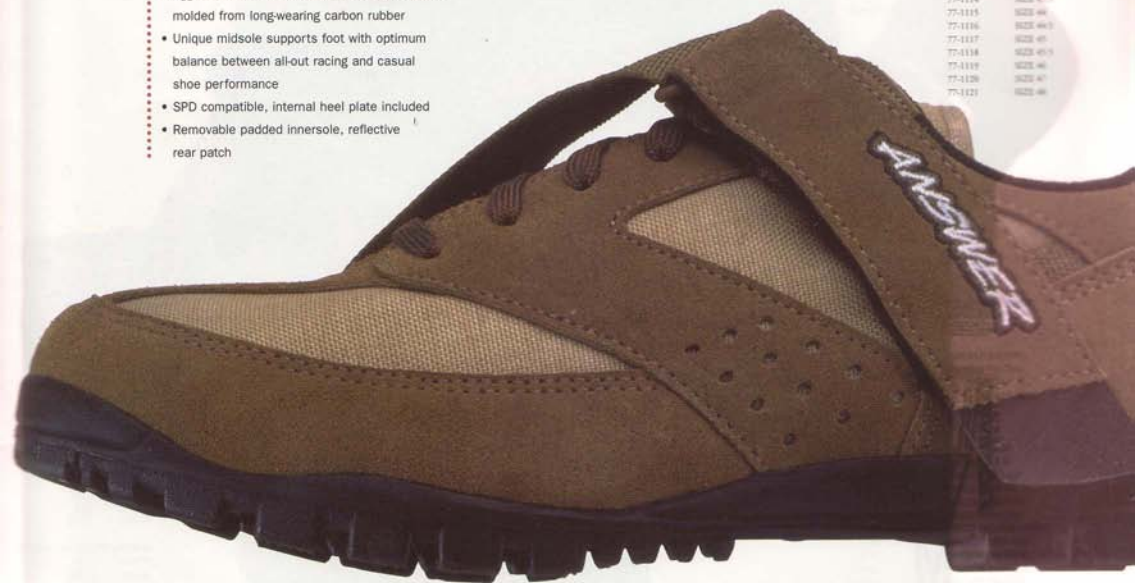
Joe Parkin

Team DIAMONDBACK

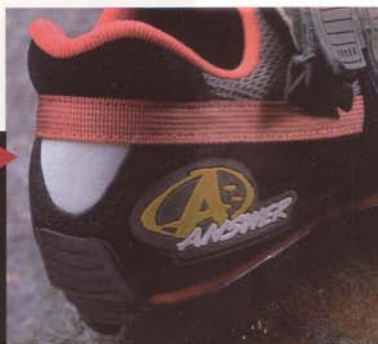
Photo: Mike Anderson

CHUGGER II

77-1106	9223 96
77-1107	9223 97
77-1102	9223 97 1/2
77-1104	9223 98
77-1106	9223 98 1/2
77-1105	9223 98
77-1106	9223 99 1/2
77-1107	9223 99
77-1108	9223 99 1/2
77-1109	9223 99 1/2
77-1110	9223 99 1/2
77-1111	9223 99
77-1112	9223 99 1/2
77-1113	9223 99
77-1114	9223 99 1/2
77-1115	9223 99
77-1116	9223 99 1/2
77-1117	9223 99
77-1118	9223 99 1/2
77-1119	9223 99
77-1120	9223 97
77-1121	9223 98



Heel counter has been reshaped and strengthened for '96 to include an external wrap-around, no-stretch nylon webbing strap for greater support.



E

S

Answer T-Shirts

Let everyone know you ride in the dirt.

- Heavyweight 100% cotton
- Screened with non-fade ink
- Graphics continually updated, call for our latest designs

MANITOU SPORT SHIRT BLK

77-7110	MD
77-7111	LG
77-7112	XL

MANITOU LOGO T-SHIRT WHITE

77-7906	MD
77-7907	LG
77-7908	XL
77-7909	XXL

MANITOU LOGO T-SHIRT BLACK

77-7911	MD
77-7912	LG
77-7913	XL

MANITOU RACE TEAM T-SHIRT WHITE

77-7915	MD
77-7916	LG
77-7917	XL



ANSWER



MANITOU LETTERMAN JACKET

77-7100	SM
77-7101	MD
77-7102	LG
77-7103	XL
77-7104	XXL

ANSWER LETTERMAN JACKET

01-7410	SM
01-7411	MD
01-7412	LG
01-7413	XL
01-7414	XXL



◀ Add an array of Answer
T-shirts to your off-road
collection.



A C C E S

Bags

- Adventurer bags in every size to fit your needs.
- Gear bag can carry a week's worth of riding gear
 - Backpack carries everything you need for a long day
 - Fanny pack for when you only need the essentials

BAGS:
02-9999 BACKPACK
77-0200 GEAR BAG
24-3000 FANNY PACK



Hats

- Keep your head cool and in style.
- Quality construction
 - Graphics continually updated, call for our latest designs



HATS:
77-7000 MANITOU I.D. HAT, BLACK
77-7005 M DESIGN HAT, BLACK

BANNERS:
51-1220 SMALL ANSWER RACING
51-1221 LARGE ANSWER RACING
51-1222 MANITOU TRACK 90 X 105
51-1223 MANITOU STORE 12 X 36
51-1236 PRO FORK 5' X 10'

STICKERS:
51-5021 MANITOU SMALL 10P
51-5022 MANITOU LARGE 10P
51-5100 WINDSHIELD LIVE FAST
51-5101 WINDSHIELD ANSWER
51-5106 WINDSHIELD MANITOU
51-5107 WINDSHIELD PROFORX
51-5108 WINDSHIELD FACTORY EFFEX
51-5130 BACK WINDOW LIVE FAST
51-5131 BACK WINDOW ANSWER
51-5136 BACK WINDOW MANITOU
51-5137 BACK WINDOW PROFORX
11-6653 ANSWER FUN LOGO KIT
11-6670 ANSWER CORE CYCLING LOGO KIT



Be part of the Answer team with your own letterman jacket. Available in both Answer and Manitou designs.

Letterman jacket is constructed of heavyweight wool body with leather sleeves, ribbed waistband, cuffs and collar.





INTERNATIONAL DISTRIBUTORS:

ARGENTINA: CHARM S.A. IMPORT. 541-865-5944
AUSTRALIA: REP/CO 61-3-568-0211
AUSTRIA: EHS 43-31-36-539490
BELGIUM-HOLLAND: A.T.B. SALES 441-42-4753-566
BRAZIL: FERRARO'S BIKE CENTER 595-61-500075
CANADA: R & M WEST 604-276-8666
CANADA: R & M EAST 905-821-4687
COLOMBIA: INDUSTRIAL OSSA 57-1-231-4286
COSTA RICA: XCESSO DEPORTIVO 506-224-5112
CZECH REPUBLIC: CYCLO SPORT 42-204-82641
DENMARK: CYCEL-KLUBBEN 45-86-152-033
ENGLAND: A.T.B. SALES 441-424-753-566
FINLAND: VELOSPORT KY 358-0-757-1377
FRANCE: IRLA 33-1-47-90-1876
GERMANY: DELTA SPORT 49-9101-9202
HUNGARY: VELOTRADAI KFT. 36-1-220-4851
ICELAND: BREIDUNN OLAFSSON 354-564-4489
ITALY: FREEWHEELING 395-444-61525
INDONESIA: SUN MOTOR 62-21-856-4987
JAPAN: A&F CORPORATION 81-33-209-7575
JAPAN: MIZUTANI 81-33-840-2151
MEXICO: BICEMPORT 525-5-752259
NEW CALEDONIA: NEW CYCLES 687-27-2050
NEW ZEALAND: SPORTSPO RACING 64-9-489-7712
NORWAY: HARD ROCK 47-67-14-7240
PACIFIC RIM: SUN MOTOR GROUP 62-21-856-4987
PARAGUAY: FERRARO'S BIKE CENTER 595-61-500075
POLAND: BIKESHOP SC 487-12-21-9004
PORTUGAL: DESPORTO PROGRESSO 351-1-469-1805
ROMANIA: BIKE SPORT CO. 40-59-121-745
SOUTH AFRICA: PROMOTION PRODUCTS 27-11-465-1336
SPAIN: DIRT RACING 341-663-7125
SWEDEN: GRAHNS 46-141-545-80
SWITZERLAND: COLD BIKE SERVICE 41-21-646-1371
VENEZUELA: BICI BICI 58-2-265-5362



*This year's catalog is brought to you by the
120 hard working and dedicated people of Answer Products, Inc.*

IMBA

*Answer proudly supports IMBA. If you'd like to join,
please send your \$20 membership fee to: P.O. Box 7578, Boulder, CO 80306*

ANSWER PRODUCTS, INC.
2746 AVENUE SCOTT, VALENCIA, CALIFORNIA 91355
PHONE: (805) 257-4411 FAX: (805) 257-4011
E-MAIL: answerc@aol.com