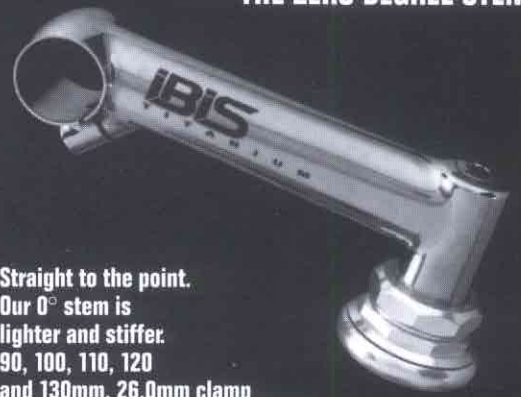


### THE -17 DEGREE STEM



The traditional elegance of the -17° stem. 100, 110, 120, 130 and 140mm. 26.0mm clamp. AheadSet™ version also available.

### THE ZERO DEGREE STEM



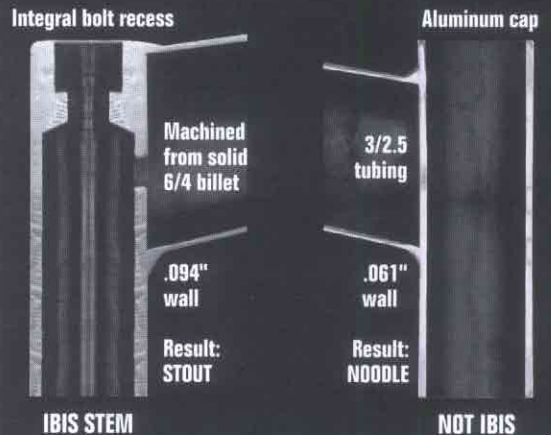
Straight to the point. Our 0° stem is lighter and stiffer. 90, 100, 110, 120 and 130mm. 26.0mm clamp. AheadSet™ version also available.

### THE MOUNTAIN STEM



The Mountain Stem. 0°, 10° or 25° rise, 120, 135 and 150mm. Shown with optional cable hanger. For either 1" or 1 1/8" forks. 25.4mm clamp

### TITANIUM QUILL CROSS SECTIONS



## THE IBIS TITANIUM STEMS

**The look** is unlike any other stem. Its functional beauty and fine craftsmanship are meant for those who appreciate the very best. Several unique features incorporated into the Ibis Titanium Stem distinguish it from other titanium stems on the market.

**We make them ourselves.** It's common for components to be manufactured by a third party. At Ibis, we provide you with the finest stem possible by making our own. We design, build, test, and most importantly, we ride them. It's one rider to another—no middleman involved.

**Ti 6Al-4V quill machined from billet** Most titanium stems use tubing for their quill material. The Ti 6Al-4V alloy used in the Ibis stem (unavailable in tubing form) is 35% stronger than the Ti 3Al-2.5V alloy used in tubing. Such tubing is neither strong nor stiff enough to be adequate—both strength and stiffness are compromised. Our integral machined bolt recess is another key to making a strong, light stem. Through wall thickness manipulation we are able to radially stiffen the quill at the critical juncture of the stem extension, virtually eliminating quill deformation

which can lead to premature yield of the stem. Extensive destructive testing has helped evolve this advanced design to its present state.

#### CNC Machined Stem Barrel

Once again we forego the temptation to use an easier-to-manufacture and less expensive component. Our barrel has evolved from the testing of many different designs. Made of Ti 6Al-4V, it is 2.5 times as thick at its center as a barrel made from tubing, yet thinner at the ends. Adding strength where it counts becomes an integral part of the design.

**AheadSet™** compatible versions are also available for both road and mountain stems.

#### Formed Extensions

You will appreciate the handsome appearance of our formed Titanium extensions. They combine strength where it's needed with beauty where it's seen. Finally, each stem is meticulously hand finished to a fine satin luster.

#### What does it all add up to?

Not much, if you've got your gram scale handy.

**Weight** with standard titanium wedge bolt: 12cm Mountain, 216gm; 12cm Road, 203gm; 12cm AheadSet™, 120gm.

# IBIS PRICE LIST

## IBIS MOJO

Frameset .....	\$1150
DX Thumbshifters .....	1715
DX Rapidfire .....	1760

## IBIS XTRAMOJO

Frameset .....	1350
XT Thumbshifters .....	2295
XT Rapidfire Plus .....	2340
XTR .....	2870

All XtraMojos have choice of '93 Manitou or Rock Shox Mag 21.

## IBIS S/S

Frameset .....	1035
DX Thumbshifters .....	1600
DX Rapidfire Plus .....	1645

## IBIS X/S

Frameset .....	1115
XT Thumbshifters .....	2065
XT Rapidfire Plus .....	2110
XTR .....	2640

## TANDEMS

Uncle Fester – DX Group (road or mountain) .....	2200
Cousin It Frameset .....	1950
Cousin It – XT Road Group (many options available) .....	3250
Cousin It – XT Mt. Group (many options available) .....	3250
Ibis Uptube Frameset (road or mountain) .....	2900
The Ibis Uptube (many options available) .....	4600

## IBIS STEMS

Ibis Titanium Road or Mountain Stem (each, stocking dealer) .....	275
An initial order of three stems is required to establish stocking dealer status.	
Ibis Titanium Road or Mountain Stem (three) .....	275
Ibis Titanium Road or Mountain Stem (six) .....	275
Ibis Titanium Road or Mountain Stem (non-stocking dealer) .....	275
Ibis CrMo AheadSet™ Stem (180g road, 220g mtn!) .....	79

Hanger for Ibis Titanium Mountain Stem \$10.00 additional.

## MPACKS

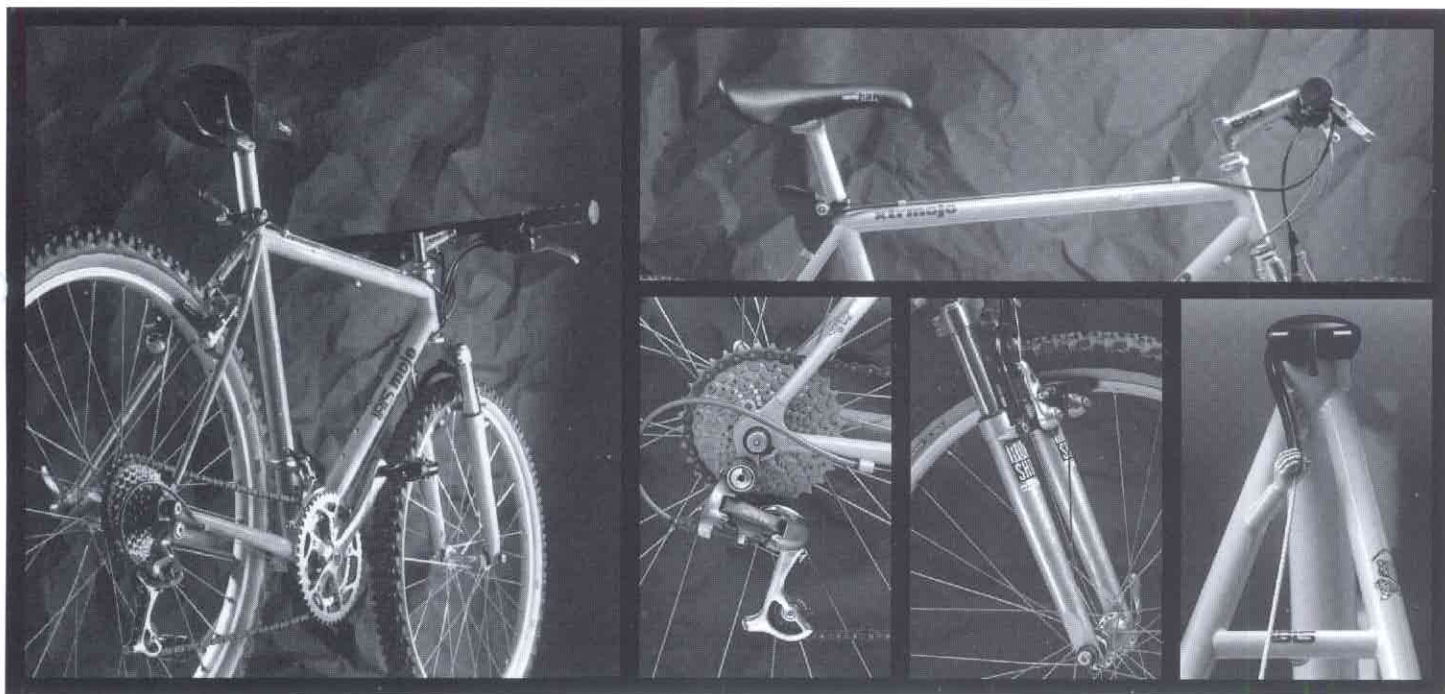
"Scumbag" Pannier/Daypack combo pannier .....	200
"Buttwad" Fanny Pack .....	48.00

All prices effective 9/15/92 and subject to change whenever we feel like it.

P.O. BOX 275 SEBASTOPOL CA 95473 PHONE 707.829.5615 FAX 707.829.5687



# IBIS mojo



## IT'S TIME TO GET YOURS WORKIN'

### Time to chuck that slug you're riding?

Ibis has got what you want. The Ibis Mojo and the Ibis XTRMojo (that's: EX ter mo jo).

**What you get** Nothing short of a couple of the sweetest bikes Ibis has ever made. Lightweight frames made by Ibis, with our own tubing and geometry to support the use of either the Rock Shox, Answer/Manitou, or Tange Shockblades.

**"Rides like an Ibis"** Music to our ears. Usually the first thing out of someone's (grinning) mouth after the first ride on a Mojo. It's the sum of the ingredients that gives it that special ride: the custom blend of expertly matched CrMo tubing (Ritchey Logic, Tange OS MTB, custom-drawn True Temper/Ibis) and the geometry evolved from ten years of building mountain bikes.

**Why Mojo?** 'Cause it's addicting. Mojo has a lot of meanings. To us, in its purest form: something you can't live without. We think you'll agree.

**The Ibis Philosophy** We build what we want to ride. Build it right here in our Sebastopol frame shop. Not on Fantasy Island (Taiwan), not even in someone else's shop down the street or across the tracks. Build it to last, not to break. Build it light. Remember, we ride what we build — we're not going to ride a tank (or a noodle, for that matter). We build it right, consistently. And we sweat the details. Need an example? Check out the photos above, especially the lower right photo of our new Ibis Hand Job™ cable stop, just one of the many details that the fifteen employees at Ibis handle for you every day.

**Always the best** There's no such thing as a 1992 or 1993 model Ibis. We build the best bike possible, each day. While larger manufacturers decide on their specifications for the next model year in February (a year ahead of time), we decide the day we build your bike.

**The Ibis Mojo** Full XT or DX group (Rapidfire Plus or thumbshifters), choice of fork, Salsa stem, Ritchey Vantage Comp rims, Tioga bars.

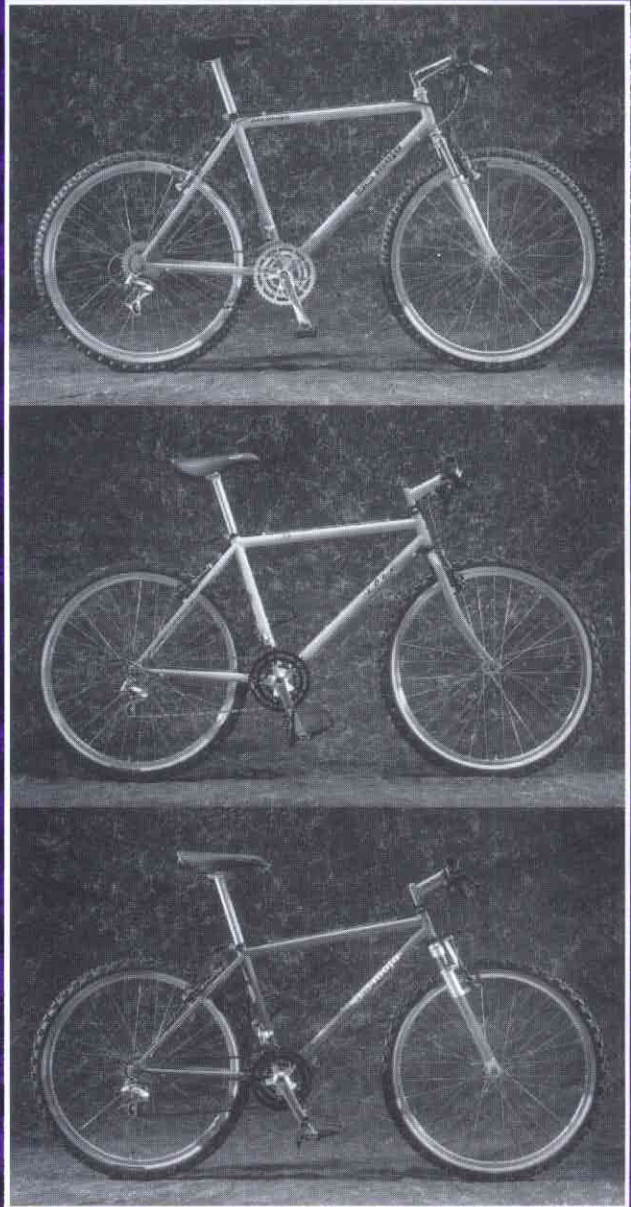
**The Ibis XTRMojo** Full XTR group, SPD pedals, Ibis Titanium Stem!, choice of fork, Mavic 231 rims, Salsa-ProMoto bars, Z-Max WCS tires.

**Colors** Bold Gold or Grey Gray

SIZE C to C	T.T. length	H.T. angle	S.T. angle	C.S. length	Frame weight	Rake and Trail			Drop inches	D.O. spacing	Stem length
						Manitou	RockShox	Tange			
15.5	22.5	70.5	73	16.8	4.4	1.6/2.91	1.6/2.91	1.5/3.0	1.26	135	120
17.0	22.875	70.5	73	16.8	4.45	1.6/2.91	1.6/2.91	1.5/3.0	1.26	135	135
18.5	23.25	71	72	16.8	4.5	1.6/2.79	1.6/2.79	1.5/2.9	1.26	135	150



# SE WE LL G N S



**iBIS**



# WHY IN HELL SHOULD YOU RIDE AN IBIS, ANYWAY?

**Proven Design** is a result of our mega-experience building the best bikes we can. Our choices of construction method, tubing size and wall thickness reflect this experience. Ibis bikes are designed as a whole, not as isolated spec sheet numbers. Tube lengths and angles are important, but to isolate one dimension defies the designer's art—that the bicycle is the sum of many interacting ingredients.

**Solid Value** comes from the fact all Ibis bikes are built by us, not for us by someone else. Everything is done under one roof in Sebastopol, California. Attention is paid to every detail to ensure your bike is as good as you expect it to be. We build it just the way you want it, from braze-ons to paint to components. Our welders, braziers, machinists, painters and finishers all care how your bike turns out. One look at an Ibis and it will be obvious.

**Reliable Performance** means a bike you can trust. Every Ibis can be pushed hard without fear. The dialed-in geometry is optimized for a wide variety of conditions—a result of our riding experience. Our bikes aren't one-season disposables—we're willing to sacrifice an ounce or two to achieve long term durability. And our bikes aren't trend-laden gismo hangars. You won't have to hang your head in shame next season because your bike is loaded with mondo bizarro doodads that you once thought you couldn't live without.

## **22 Pound S/S, 23 Pound Mojo!**

When you glance at the numbers, our framesets might not appear to be super lightweight. But remember that we weigh actual production bikes—the common sizes—and we don't lie about weight. We *really can* build a 22-pound S/S or a 23-pound Mojo using the stock frame. We're talking about a reliable, durable, if not bombproof bike here, not a self-destructing fettucini frame!

## **The Component Diet**

We concentrate on weight reduction through component selection. Look at it this way. Frame weight makes up about 20% of the weight of a complete bike, so it's both easier and more sensible—not to mention safer—to concentrate on weight reduction of the components, which account for 80% of the bike's weight. Because of the tremendous choice available for weight-shaving aftermarket components, we leave those choices to you. You can buy an Ibis in either frameset or complete bike form, and we give you the choice of XTR, XT or DX groups.

## **Our Steel's A Steal**

Titanium is a wonderful material, and we use it in stems and tandems. But when we look at the cost of making a titanium frame, it's clear that our good value steel frames are still a steal. If you put the \$1000 extra that a titanium frame would cost into a few well-chosen lightweight components for your new Ibis steel frame, you'll end up with a lighter bike than the titanium version.

## **What About Aluminum?**

Many of the recent advances in Aluminum technology are intriguing to us, but the nagging problem of metal fatigue still remains. Aluminum has a nasty habit of failing catastrophically—all at once, without warning. This is undesirable. At Ibis, the frame material of choice is still steel.

## **Always The Best**

There is no such thing as a 1992 or 1993 model Ibis. We build the best bike possible, each day. While larger manufacturers decide on their specifications for the next model year in February—a year ahead of time—we make our choices on the day we build your bike.

## **The Ibis Philosophy**

We build what we want to ride. Build it right here in our Sebastopol frame shop. Build it to last, not to break. Build it light. Remember, we ride what we build. We build it right, consistently. And we sweat the details. Need an example? Check out the photos to the right, including the photo of our new Ibis Hand Job cable stop, just one of the many details that the employees at Ibis handle for you every day.

## **Never A Dull Moment**

New ideas are developing daily at Ibis. If you don't see what you're looking for on these pages, give us a call. We're probably already working on it.





# IBIS **mojo**

## Time to chuck that slug you're riding?

Ibis has got what you want. The Ibis Mojo and the Ibis XtraMojo (that's: EX tra mo jo).

**What you get:** Nothing short of a couple of the sweetest bikes Ibis has ever made. Lightweight frames made by Ibis with our own tubing and geometry developed to support the use of either the Rock Shox Mag 21, Rock Shox Quadra, or the '93 Answer/Manitou.

**"Rides like an Ibis"** Music to our ears. Usually the first thing out of someone's (grinning) mouth after their first Mojo ride. It's the sum of the ingredients that gives the Mojo that special ride: the custom blend of expertly matched CrMo tubing (Ritchey Logic, Tange OS MTB, custom-drawn True Temper/Ibis) and the geometry evolved from ten years of building mountain bikes.

**Why Mojo?** 'Cause it's addictive. Mojo has a lot of meanings. To us, in its purest form, it's something you can't live without. We think you'll agree.

*The new Ibis CrMo Stem,  
and the famous Ibis Hand Job*

## The Ibis XtraMojo

You have a lot to think about when you order this guy. Any Imron color is standard. Which braze-ons do you want? Would you prefer the Mag 21 from Rock Shox or the '93 Manitou? You get the gorgeous cast head badge, and you can choose the optional long fade paint job, unequaled in the industry. Choose from the standard XT group or the optional enhanced XTR group. Or you can build it yourself if you want to buy just the frameset.

## The Ibis Mojo

The more affordable suspension bike from Ibis. Built with the same lightweight frame as the XtraMojo, it comes standard with the Rock Shox Quadra. And like the S/S, you can choose from three beautiful Imron colors. You can buy the complete bike (Shimano DX) or the frameset alone.

## What Does It All Add Up To?

Not much. With a few lightweight components, about 23 pounds.







# IBIS S/S

## How We Build 'Em

Having done our geometry homework over the years, we've also got the program on frame construction dialed in. Built from expertly TIG welded CrMo tubing, our bikes are designed to give you years of trouble-free service. We could easily make a bike light enough to last just one season—or, worse yet, part of one season—but that's not our game. By careful selection of each frame tube on each size bike, we are able to build a reliable frame lighter than many composite and aluminum bikes, and within a few ounces of the disposable one-season steel bikes.

**A typical set** of tubes found on our bikes might consist of Logic chainstays, head tube and top tube, along with a Tange MTB 35mm quad butted down tube, Ibis/True Temper seat tube, and either a Ritchey Logic or Koski fork. The lightweight taper-gauge blades of these forks smooth out the bumps, while the large tip diameter keeps the oscillation and deflection under heavy braking to a minimum. The standard steering system on all of our single

bikes is the Dia Compe AheadSet™—lightweight and easy to adjust, whether you're in the shop or out on the trail. You also have the option to choose a threaded fork if that's your desire.

## The Ibis X/S and S/S

These are the no-B.S. mountain bikes that define the "Sweet Ibis Ride", a product of our experience designing, building, riding, racing, sleeping and eating bicycles for the last decade.

**Geometry on the S/S** is the result of building, racing and riding custom mountain bikes. We have experimented with a multitude of variations, and the end product is the current size and geometry range of the S/S.

**Starting with our 12" frame** (revered among the sub-62" species of the human genus), frame sizes increase gradually to our whopping NBA player-compatible 23" frame, a bruiser recommended for those of you over 6'6". For all the rest of us in-between folks, we have five other sizes. Check out the specs. One of our frames will fit you like a glove.

## The Ibis X/S

This bike has all the trimmings. Choose from hundreds of available Imron colors—any Imron is standard. Select from several braze-on configurations. And the sky's the limit with our custom paint options, like our stunning Long Fade. As with all Ibis bikes, your X/S comes standard with the very popular Hand Job braze-on (ask for it by name!). As a finishing touch we adorn your bike with our gorgeous cast head badge—it's jewelry, really. The standard X/S bike package includes a Shimano Deore XT group (Rapidfire Plus or thumbshifters). You may also choose the X/S in an XTR version, which includes even more ultra-light components, including an Ibis Titanium Stem.

## The Ibis S/S

The Ibis S/S continues to be one of the most affordable handcrafted framesets available. Like its cousin Mojo, you can choose from three gorgeous Imron colors: Well Red, True Blue, and Just Purple. Purchase a frameset to fill out yourself or choose a complete DX package.



## SPECIFICATIONS

Component	Mojo and SS	XtraMojo and XS	XtraMojo/XS with XTR
Headset (1" steerer)	Dia-Compe Alloy AheadSet™	Dia-Compe Alloy AheadSet™	Dia-Compe Sealed AheadSet™
Front & Rear Brakes	Shimano DX Cantilever	Shimano XT Cantilever	Shimano XTR Cantilever
Brake Levers	DX (XT on Rapidfire groups)	XT	XTR
Shift Levers	DX Thumbshifters or Rapidfire Plus	XT Thumbshifters or Rapidfire Plus	XTR Rapidfire Plus
Front Derailleur	DX	XT	XTR
Rear Derailleur	DX	XT	XTR
Chain	Shimano Hyperglide	Shimano Hyperglide	Shimano Hyperglide
Handlebars	Tioga Mountaineer	Tioga Mountaineer	Salsa Pro Moto
Rear Hub (32 hole)	DX	XT	XTR
Front Hub (32 hole)	DX	XT	XTR
Freehub Cogs	DX 7-speed 12/28	XT 7-speed 12/28	XTR 8-speed 12/32
Rims	Ritchey Vantage Comp	Ritchey Vantage Comp	Mavic 231
Crankset	DX	XT	XTR
Bottom Bracket	DX Cartridge	XT Cartridge	XTR
Saddle	Vetta Gel	Vetta Gel	Ti rails
Tires	Ground Control More Extreme	Ground Control More Extreme	Ritchey Z-Max
Pedals	DX	XT	SPD
Paint	True Blue, Well Red, Just Purple	Any Imron	Any Imron
Paint options	Zippo, buy an XtraMojo or an XS if you want options.	Long fades, short fades, pearls, whatever your heart desires. Call us.	Long fades, short fades, pearls, whatever your heart desires. Call us.
Braze on options	Nada, ditto above.	Rack, extra bottles, or ??	Rack, extra bottles, or ??

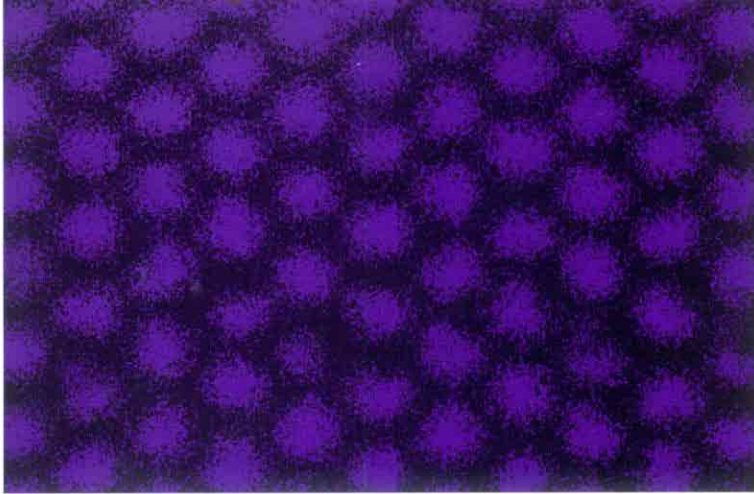
### Frame Specifications for XtraMojo, Mojo, XS and SS

Fork	XtraMojo: 93 Manitou or Mag 21; Mojo: Rock Shox Quadra; XS/SS: Richey Logic or Koski. Ibis Tandem on 23"
Steerer	Threadless to fit the Dia-Compe AheadSet™ system. Threaded steerers also available for you retros.
Top Tube	1 1/4" on all bikes, Logic MTB, different gauges.
Down Tube	Light gauge 1 1/4" Logic MTB on 12" and 14", 1 3/8" Tange quad butt on 15.5"-20", 1 1/2" 4130 on 23"
Seat Tube	All bikes have custom drawn reverse butt Ibis/True Temper 1 1/4" seat tubes. The nicest seat post fit in the industry
Chainstays	12"-20" have Logic MTB triple butted tapered chainstays, 23" has Ibis/True Temper custom drawn tandem stay.
Seatstays	12" and 14" have 5/8 x .032 tapered stays, all others have 5/8 x .040 tapered stays.
Stem	All sizes have Ibis CrMo stems, with new CNC machined heads, hidden binders. The gorgeous Titanium replicas.
Head Tube	1" Logic MTB on all frame sizes up to 20". The 23" head tube is 1 1/8" oversize

Geometry	Mojo/XtraMojo			Ibis XS/SS						
	15.5	17.0	18.5	12	14	15.5	17	18.5	20	23
Head Tube Angle	70.5	70.5	71	70	70	70.5	70.5	71	71	71
Seat Tube Angle	73	73	72	74	74	73	73	72	71	71
Fork Rake	1.5	1.5	1.5	1.8	1.8	1.8	1.8	1.8	1.8	1.8
Trail (2.0" knobby)	3.1	3.1	2.9	2.9	2.9	2.8	2.8	2.7	2.7	2.7
Standover Height	29.0	30.0	31.0	25.75	27.0	28.25	29.5	30.5	31.75	35.5
Top Tube Length	22.5	22.875	23.25	20.75	20.75	21.5	22.5	22.75	23.0	24.5
Chainstay Length	16.8	16.8	16.8	16.8	16.8	16.8	16.8	16.8	16.8	17.5
Drop	1.26	1.26	1.26	2.0	2.0	1.5	1.5	1.5	1.5	1.5
Stem (length x angle)	5x10	5x10	6x10	4x-10	4x10	5x10	5x10	6x10	6x10	6x10

All measurements are center to center, and are given in inches. Standover height measured at mid top tube. Drop is the vertical distance between the axle center and bottom bracket center. Specifications subject to change at our momentary whim/impulse.





**At Ibis Cycles,  
building and riding  
bikes occupies most  
of our waking hours.  
We ride our bikes  
a lot, so we build  
what we want to ride.  
We've been doing it  
for more than  
ten years.**

